

## Product datasheet for **TA333311**

### SLC37A3 Rabbit Polyclonal Antibody

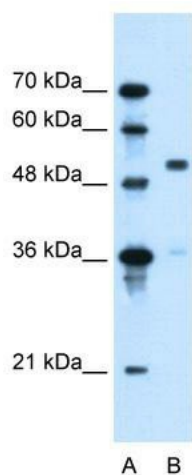
#### Product data:

Product Type:	Primary Antibodies
Applications:	IHC, WB
Recommended Dilution:	WB, IHC
Reactivity:	Human
Host:	Rabbit
Isotype:	IgG
Clonality:	Polyclonal
Immunogen:	The immunogen for Anti-SLC37A3 Antibody: synthetic peptide directed towards the middle region of human SLC37A3. Synthetic peptide located within the following region: FFGLLVSP EEIGLSGIEAEENFEEDSHRPLINGGENEDEYEPNYSIQDDS
Formulation:	Liquid. Purified antibody supplied in 1x PBS buffer with 0.09% (w/v) sodium azide and 2% sucrose. <i>Note that this product is shipped as lyophilized powder to China customers.</i>
Purification:	Affinity Purified
Conjugation:	Unconjugated
Storage:	Store at -20°C as received.
Stability:	Stable for 12 months from date of receipt.
Predicted Protein Size:	54 kDa
Gene Name:	solute carrier family 37 member 3
Database Link:	<a href="#">NP_996996</a> <a href="#">Entrez Gene 84255 Human</a> <a href="#">Q8NCC5</a>
Background:	SLC17A3 may be involved in actively transporting phosphate into cells via Na(+) cotransport.
Synonyms:	FLJ16367; MGC32939
Note:	Immunogen sequence homology: Human: 100%; Horse: 93%; Rabbit: 93%; Bovine: 92%; Dog: 86%; Rat: 85%; Pig: 79%; Guinea pig: 79%
Protein Families:	Transmembrane

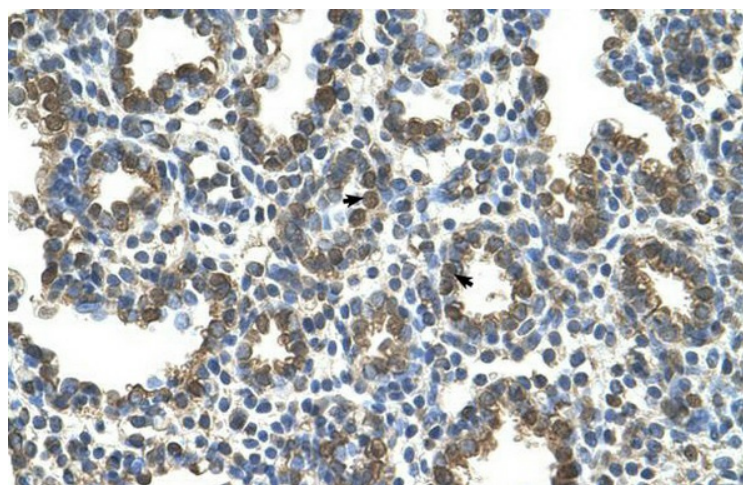


[View online »](#)

## Product images:



WB Suggested Anti-SLC37A3 Antibody Titration:  
0.2-1 ug/ml; Positive Control: HepG2 cell lysate



Human Lung