

## Product datasheet for **TA333310**

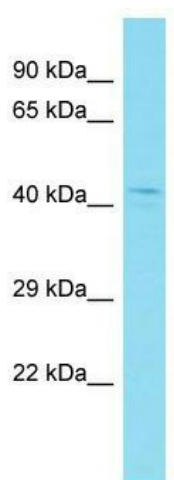
### CCDC74B Rabbit Polyclonal Antibody

#### Product data:

Product Type:	Primary Antibodies
Applications:	WB
Recommended Dilution:	WB
Reactivity:	Human
Host:	Rabbit
Isotype:	IgG
Clonality:	Polyclonal
Immunogen:	The immunogen for Anti-CCDC74B Antibody is: synthetic peptide directed towards the N-terminal region of Human CCDC74B. Synthetic peptide located within the following region: QHSEMLAKLHEEIEHLKRENKDLRYKLIMNQTSQKKDGPSTGNHLSRASAP
Formulation:	Liquid. Purified antibody supplied in 1x PBS buffer with 0.09% (w/v) sodium azide and 2% sucrose.
Purification:	Affinity Purified
Conjugation:	Unconjugated
Storage:	Store at -20°C as received.
Stability:	Stable for 12 months from date of receipt.
Predicted Protein Size:	41 kDa
Gene Name:	coiled-coil domain containing 74B
Database Link:	<a href="#">NP_997193</a> <a href="#">Entrez Gene 91409 Human</a> <a href="#">Q96LY2</a>
Background:	The function of this protein remains unknown.
Synonyms:	DKFZp434E2321
Note:	Immunogen sequence homology: Human: 100%



[View online »](#)

**Product images:**

Host: Rabbit; Target Name: CCDC74B; Sample Tissue: MCF7 Whole Cell lysates; Antibody Dilution: 1.0 ug/ml.