

Product datasheet for **TA333309**

ZDHHC24 Rabbit Polyclonal Antibody

Product data:

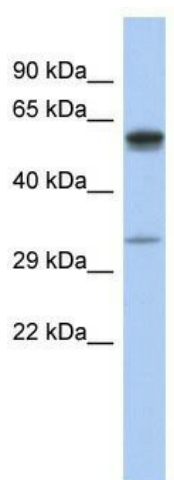
Product Type:	Primary Antibodies
Applications:	WB
Recommended Dilution:	WB
Reactivity:	Human
Host:	Rabbit
Isotype:	IgG
Clonality:	Polyclonal
Immunogen:	The immunogen for Anti-ZDHHC24 Antibody: synthetic peptide directed towards the middle region of human ZDHHC24. Synthetic peptide located within the following region: QHSYDLGPCHNLQAALGPRWALVWLWPFLASPLPGDGITFQTTADVGHTA
Formulation:	Liquid. Purified antibody supplied in 1x PBS buffer with 0.09% (w/v) sodium azide and 2% sucrose.
Purification:	Affinity Purified
Conjugation:	Unconjugated
Storage:	Store at -20°C as received.
Stability:	Stable for 12 months from date of receipt.
Predicted Protein Size:	30 kDa
Gene Name:	zinc finger DHHC-type containing 24
Database Link:	NP_997223 Entrez Gene 254359 Human Q6UX98
Background:	The specific function of the protein remains unknown.
Synonyms:	DHHC-type containing 24; DHHC domain containing 24; zinc finger



Note: Immunogen sequence homology: Pig: 100%; Rat: 100%; Horse: 100%; Human: 100%; Guinea pig: 100%; Bovine: 92%; Dog: 86%

Protein Families: Transmembrane

Product images:



WB Suggested Anti-ZDHHC24 Antibody
Titration: 0.2-1 ug/ml; ELISA Titer: 1:62500;
Positive Control: Human Small Intestine