

Product datasheet for **TA333308**

ZDHHC24 Rabbit Polyclonal Antibody

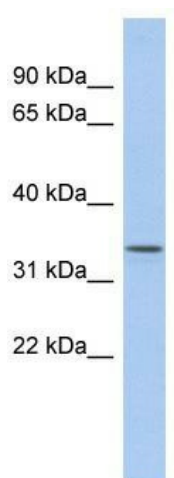
Product data:

Product Type:	Primary Antibodies
Applications:	WB
Recommended Dilution:	WB
Reactivity:	Human
Host:	Rabbit
Isotype:	IgG
Clonality:	Polyclonal
Immunogen:	The immunogen for Anti-ZDHHC24 Antibody: synthetic peptide directed towards the N terminal of human ZDHHC24. Synthetic peptide located within the following region: YVLVLPGPPLGPLARALQLALAAFQLLNLLGNVGLFLRSDPSIRGVML
Formulation:	Liquid. Purified antibody supplied in 1x PBS buffer with 0.09% (w/v) sodium azide and 2% sucrose.
Purification:	Affinity Purified
Conjugation:	Unconjugated
Storage:	Store at -20°C as received.
Stability:	Stable for 12 months from date of receipt.
Predicted Protein Size:	30 kDa
Gene Name:	zinc finger DHHC-type containing 24
Database Link:	NP_997223 Entrez Gene 254359 Human Q6UX98
Background:	The specific function of the protein remains unknown.
Synonyms:	DHHC-type containing 24; DHHC domain containing 24; zinc finger
Note:	Immunogen sequence homology: Dog: 100%; Pig: 100%; Human: 100%; Mouse: 100%; Guinea pig: 100%; Rat: 93%; Horse: 93%; Bovine: 93%
Protein Families:	Transmembrane



[View online »](#)

Product images:



WB Suggested Anti-ZDHHC24 Antibody Titration:
0.2-1 ug/ml; ELISA Titer: 1:1562500; Positive
Control: Human Liver