

Product datasheet for **TA333296**

Synapsin I (SYN1) Rabbit Polyclonal Antibody

Product data:

| | |
|-------------------------|---|
| Product Type: | Primary Antibodies |
| Applications: | WB |
| Recommended Dilution: | WB 1:500 - 1:2000 |
| Reactivity: | Human, Mouse, Rat |
| Modifications: | Phospho-specific |
| Host: | Rabbit |
| Isotype: | IgG |
| Clonality: | Polyclonal |
| Immunogen: | A phospho specific peptide corresponding to residues surrounding S549 of human SYN1 |
| Formulation: | Store at -20°C (regular) and -80°C (long term). Avoid freeze / thaw cycles. Buffer: PBS with 0.02% sodium azide, 50% glycerol, pH7.3. |
| Concentration: | lot specific |
| Purification: | Affinity purification |
| Conjugation: | Unconjugated |
| Storage: | Store at -20°C as received. |
| Stability: | Stable for 12 months from date of receipt. |
| Predicted Protein Size: | 705 |
| Gene Name: | synapsin I |
| Database Link: | NP_598006 Entrez Gene 20964 Mouse Entrez Gene 24949 Rat Entrez Gene 6853 Human P17600 |



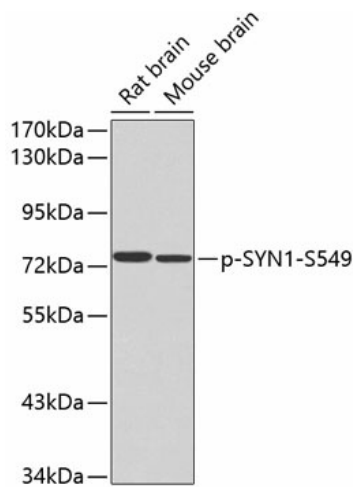
[View online »](#)

Background:

This gene is a member of the synapsin gene family. Synapsins encode neuronal phosphoproteins which associate with the cytoplasmic surface of synaptic vesicles. Family members are characterized by common protein domains, and they are implicated in synaptogenesis and the modulation of neurotransmitter release, suggesting a potential role in several neuropsychiatric diseases. This member of the synapsin family plays a role in regulation of axonogenesis and synaptogenesis. The protein encoded serves as a substrate for several different protein kinases and phosphorylation may function in the regulation of this protein in the nerve terminal. Mutations in this gene may be associated with X-linked disorders with primary neuronal degeneration such as Rett syndrome. Alternatively spliced transcript variants encoding different isoforms have been identified.

Synonyms:

SYN1a; SYN1b; SYNI

Product images:

Western blot analysis of extract from rat brain and mouse brain tissue, using Phospho-SYN1-S549 antibody (TA333296). | Secondary antibody: HRP Goat Anti-Rabbit IgG (H+L) at 1:10000 dilution. | Lysates/proteins: 25ug per lane. | Blocking buffer: 3% BSA.