

Product datasheet for **TA333290**

alpha Synuclein (SNCA) Rabbit Polyclonal Antibody

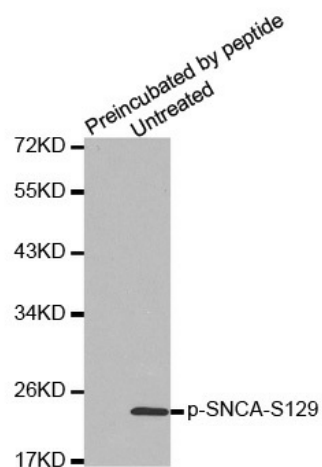
Product data:

Product Type:	Primary Antibodies
Applications:	WB
Recommended Dilution:	WB 1:500 - 1:2000
Reactivity:	Human, Mouse, Rat
Modifications:	Phospho-specific
Host:	Rabbit
Isotype:	IgG
Clonality:	Polyclonal
Immunogen:	A phospho specific peptide corresponding to residues surrounding S129 of human SNCA
Formulation:	Store at -20°C (regular) and -80°C (long term). Avoid freeze / thaw cycles. Buffer: PBS with 0.02% sodium azide, 50% glycerol, pH7.3.
Concentration:	lot specific
Purification:	Affinity purification
Conjugation:	Unconjugated
Storage:	Store at -20°C as received.
Stability:	Stable for 12 months from date of receipt.
Predicted Protein Size:	140
Gene Name:	synuclein alpha
Database Link:	NP_000336 Entrez Gene 20617 Mouse Entrez Gene 29219 Rat Entrez Gene 6622 Human P37840
Background:	Alpha-synuclein is a member of the synuclein family, which also includes beta- and gamma-synuclein. Synucleins are abundantly expressed in the brain and alpha- and beta-synuclein inhibit phospholipase D2 selectively. SNCA may serve to integrate presynaptic signaling and membrane trafficking. Defects in SNCA have been implicated in the pathogenesis of Parkinson disease. SNCA peptides are a major component of amyloid plaques in the brains of patients with Alzheimer's disease. Four alternatively spliced transcripts encoding two different isoforms have been identified for this gene.



[View online »](#)

Synonyms: NACP; PARK1; PARK4; PD1
Protein Families: Druggable Genome
Protein Pathways: Alzheimer's disease, Parkinson's disease

Product images:

Western blot analysis of extracts from mouse brain tissue, using Phospho-SNCA-S129 antibody.