

## Product datasheet for **TA333284S**

### Rb (RB1) Rabbit Polyclonal Antibody

#### Product data:

Product Type:	Primary Antibodies
Applications:	IHC, WB
Recommended Dilution:	WB 1:500-1:2000
Reactivity:	Human, Mouse, Rat
Modifications:	Phospho-specific
Host:	Rabbit
Isotype:	IgG
Clonality:	Polyclonal
Immunogen:	A phospho specific peptide corresponding to residues surrounding S780 of human RB1
Formulation:	PBS with 0.05% proclin300,50% glycerol,pH7.3.
Concentration:	lot specific
Purification:	Affinity purification
Conjugation:	Unconjugated
Storage:	Store at -20°C as received.
Stability:	Stable for 12 months from date of receipt.
Predicted Protein Size:	928
Gene Name:	RB transcriptional corepressor 1
Database Link:	<a href="#">NP_000312</a> <a href="#">Entrez Gene 19645 Mouse</a> <a href="#">Entrez Gene 24708 Rat</a> <a href="#">Entrez Gene 5925 Human</a> <a href="#">P06400</a>
Background:	The protein encoded by this gene is a negative regulator of the cell cycle and was the first tumor suppressor gene found. The encoded protein also stabilizes constitutive heterochromatin to maintain the overall chromatin structure. The active, hypophosphorylated form of the protein binds transcription factor E2F1. Defects in this gene are a cause of childhood cancer retinoblastoma (RB), bladder cancer, and osteogenic sarcoma.
Synonyms:	OSRC; p105-Rb; pp110; PPP1R130; pRb; RB

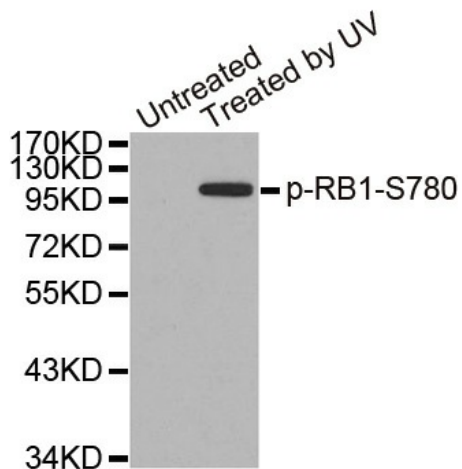


[View online »](#)

**Protein Families:** Druggable Genome, Transcription Factors

**Protein Pathways:** Bladder cancer, Cell cycle, Chronic myeloid leukemia, Glioma, Melanoma, Non-small cell lung cancer, Pancreatic cancer, Pathways in cancer, Prostate cancer, Small cell lung cancer

**Product images:**



Western blot analysis of extracts from 3T3 cells, using Phospho-RB1-S780 antibody.