

## Product datasheet for **TA333275**

### DNA PKcs (PRKDC) Rabbit Polyclonal Antibody

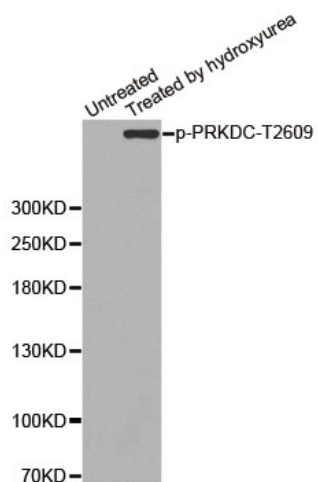
#### Product data:

Product Type:	Primary Antibodies
Applications:	WB
Recommended Dilution:	WB 1:500 - 1:2000
Reactivity:	Human
Modifications:	Phospho-specific
Host:	Rabbit
Isotype:	IgG
Clonality:	Polyclonal
Immunogen:	A phospho specific peptide corresponding to residues surrounding T2609 of human PRKDC
Formulation:	Store at -20°C (regular) and -80°C (long term). Avoid freeze / thaw cycles. Buffer: PBS with 0.02% sodium azide, 50% glycerol, pH7.3.
Concentration:	lot specific
Purification:	Affinity purification
Conjugation:	Unconjugated
Storage:	Store at -20°C as received.
Stability:	Stable for 12 months from date of receipt.
Predicted Protein Size:	4128
Gene Name:	protein kinase, DNA-activated, catalytic polypeptide
Database Link:	<a href="#">NP_008835</a> <a href="#">Entrez Gene 5591 Human P78527</a>
Background:	This gene encodes the catalytic subunit of the DNA-dependent protein kinase (DNA-PK). It functions with the Ku70/Ku80 heterodimer protein in DNA double strand break repair and recombination. The protein encoded is a member of the PI3/PI4-kinase family.
Synonyms:	DNA-PKcs; DNAPK; DNPK1; HYRC; HYRC1; IMD26; p350; XRCC7
Protein Families:	Druggable Genome, Protein Kinase
Protein Pathways:	Cell cycle, Non-homologous end-joining



[View online »](#)

## Product images:



Western blot analysis of extracts from K562 cells, using Phospho-PRKDC-T2609 antibody.