

## Product datasheet for **TA333274**

### PKC zeta (PRKCZ) Rabbit Polyclonal Antibody

#### Product data:

Product Type:	Primary Antibodies
Applications:	IHC
Recommended Dilution:	IHC 1:50-1:100
Reactivity:	Human, Mouse, Rat
Modifications:	Phospho-specific
Host:	Rabbit
Isotype:	IgG
Clonality:	Polyclonal
Immunogen:	A phospho specific peptide corresponding to residues surrounding T410 of human PRKCZ
Formulation:	Store at -20°C (regular) and -80°C (long term). Avoid freeze / thaw cycles. Buffer: PBS with 0.02% sodium azide, 50% glycerol, pH7.3.
Concentration:	lot specific
Purification:	Affinity purification
Conjugation:	Unconjugated
Storage:	Store at -20°C as received.
Stability:	Stable for 12 months from date of receipt.
Predicted Protein Size:	592
Gene Name:	protein kinase C zeta
Database Link:	<a href="#">NP_002735</a> <a href="#">Entrez Gene 18762 Mouse</a> <a href="#">Entrez Gene 25522 Rat</a> <a href="#">Entrez Gene 5590 Human</a> <a href="#">Q05513</a>



[View online »](#)

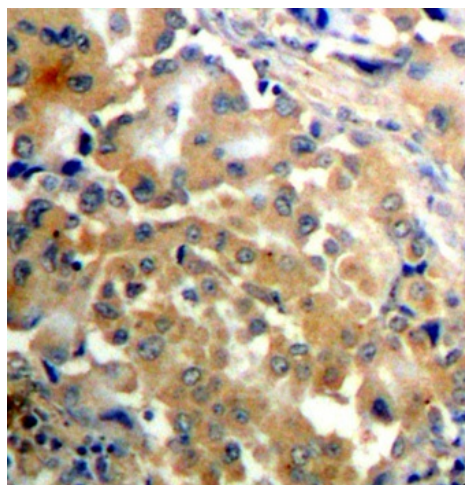
**Background:** Protein kinase C (PKC) zeta is a member of the PKC family of serine/threonine kinases which are involved in a variety of cellular processes such as proliferation, differentiation and secretion. Unlike the classical PKC isoenzymes which are calcium-dependent, PKC zeta exhibits a kinase activity which is independent of calcium and diacylglycerol but not of phosphatidylserine. Furthermore, it is insensitive to typical PKC inhibitors and cannot be activated by phorbol ester. Unlike the classical PKC isoenzymes, it has only a single zinc finger module. These structural and biochemical properties indicate that the zeta subspecies is related to, but distinct from other isoenzymes of PKC. Alternative splicing results in multiple transcript variants encoding different isoforms.

**Synonyms:** PKC-ZETA; PKC2

**Protein Families:** Druggable Genome, Protein Kinase

**Protein Pathways:** Chemokine signaling pathway, Endocytosis, Insulin signaling pathway, Tight junction, Type II diabetes mellitus

### Product images:



Immunohistochemistry of paraffin-embedded human lung carcinoma tissue, using Phospho-PRKCZ-T410 antibody (TA333274). Perform microwave antigen retrieval with 10 mM Tris/EDTA buffer pH 9.0 before commencing with IHC staining protocol.