

## Product datasheet for **TA333259**

### p95 NBS1 (NBN) Rabbit Polyclonal Antibody

#### Product data:

Product Type:	Primary Antibodies
Applications:	WB
Recommended Dilution:	WB 1:500 - 1:2000
Reactivity:	Human
Modifications:	Phospho-specific
Host:	Rabbit
Isotype:	IgG
Clonality:	Polyclonal
Immunogen:	A phospho specific peptide corresponding to residues surrounding S343 of human NBN
Formulation:	Store at -20°C (regular) and -80°C (long term). Avoid freeze / thaw cycles. Buffer: PBS with 0.02% sodium azide, 50% glycerol, pH7.3.
Concentration:	lot specific
Purification:	Affinity purification
Conjugation:	Unconjugated
Storage:	Store at -20°C as received.
Stability:	Stable for 12 months from date of receipt.
Predicted Protein Size:	754
Gene Name:	nibrin
Database Link:	<a href="#">NP_002476</a> <a href="#">Entrez Gene 4683 Human</a> <a href="#">O60934</a>
Background:	Mutations in this gene are associated with Nijmegen breakage syndrome, an autosomal recessive chromosomal instability syndrome characterized by microcephaly, growth retardation, immunodeficiency, and cancer predisposition. The encoded protein is a member of the MRE11/RAD50 double-strand break repair complex which consists of 5 proteins. This gene product is thought to be involved in DNA double-strand break repair and DNA damage-induced checkpoint activation.



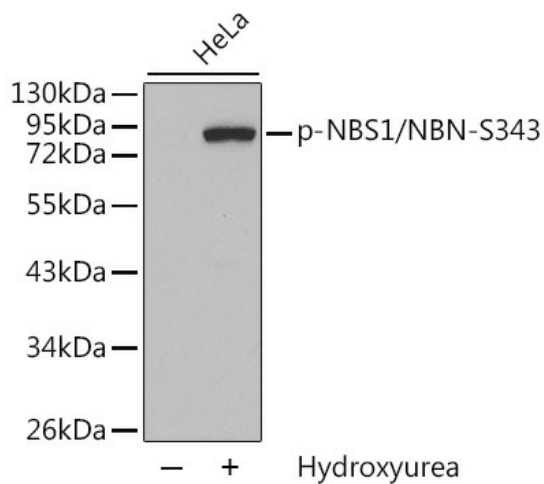
[View online »](#)

Synonyms: AT-V1; AT-V2; ATV; NBS; NBS1; P95

Protein Families: Druggable Genome

Protein Pathways: Homologous recombination

### Product images:



Western blot analysis of extracts from HeLa cells, using Phospho-NBS1/NBN-S343 antibody (TA333259). | Secondary antibody: HRP Goat Anti-Rabbit IgG (H+L) at 1:10000 dilution. | Lysates/proteins: 25ug per lane. | Blocking buffer: 3% BSA.