

Product datasheet for **TA333258**

MRCL3 (MYL12A) Rabbit Polyclonal Antibody

Product data:

Product Type:	Primary Antibodies
Applications:	IHC, WB
Recommended Dilution:	WB, 1:500 - 1:2000
Reactivity:	Human, Mouse, Rat
Modifications:	Phospho-specific
Host:	Rabbit
Isotype:	IgG
Clonality:	Polyclonal
Formulation:	Buffer: PBS with 0.02% sodium azide, 50% glycerol, pH 7.3.
Concentration:	lot specific
Purification:	Affinity purification
Conjugation:	Unconjugated
Storage:	Store at -20°C. Avoid freeze / thaw cycles.
Stability:	Stable for 12 months from date of receipt.
Predicted Protein Size:	20kDa
Gene Name:	myosin light chain 12A
Database Link:	NP_006462 Entrez Gene 67268 Mouse Entrez Gene 501203 Rat Entrez Gene 10627 Human P19105

Background: This gene encodes a nonsarcomeric myosin regulatory light chain. This protein is activated by phosphorylation and regulates smooth muscle and non-muscle cell contraction. This protein may also be involved in DNA damage repair by sequestering the transcriptional regulator apoptosis-antagonizing transcription factor (AATF)/Che-1 which functions as a repressor of p53-driven apoptosis. Alternate splicing results in multiple transcript variants. A pseudogene of this gene is found on chromosome 8.

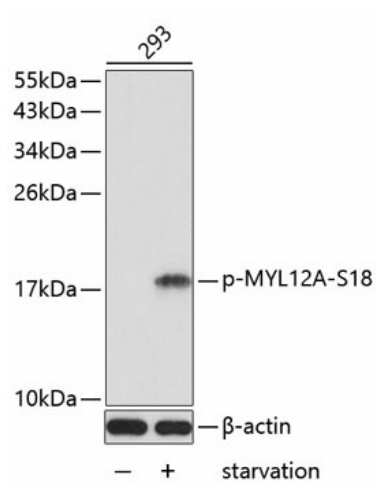
Synonyms: HEL-S-24; MLC-2B; MLCB; MRCL3; MRLC3; MYL2B



[View online »](#)

Protein Pathways: Focal adhesion, Leukocyte transendothelial migration, Regulation of actin cytoskeleton, Tight junction

Product images:



Western blot analysis of lysates from 293 cells