

## Product datasheet for **TA333251**

### MEF2A Rabbit Polyclonal Antibody

#### Product data:

Product Type:	Primary Antibodies
Applications:	IHC
Recommended Dilution:	IHC 1:50-1:100
Reactivity:	Human, Mouse, Rat
Modifications:	Phospho-specific
Host:	Rabbit
Isotype:	IgG
Clonality:	Polyclonal
Immunogen:	A phospho specific peptide corresponding to residues surrounding S408 of human MEF2A
Formulation:	Store at -20°C (regular) and -80°C (long term). Avoid freeze / thaw cycles. Buffer: PBS with 0.02% sodium azide, 50% glycerol, pH7.3.
Concentration:	lot specific
Purification:	Affinity purification
Conjugation:	Unconjugated
Storage:	Store at -20°C as received.
Stability:	Stable for 12 months from date of receipt.
Predicted Protein Size:	507
Gene Name:	myocyte enhancer factor 2A
Database Link:	<a href="#">NP_005578</a> <a href="#">Entrez Gene 17258 Mouse</a> <a href="#">Entrez Gene 309957 Rat</a> <a href="#">Entrez Gene 4205 Human</a> <a href="#">Q02078</a>
Background:	The protein encoded by this gene is a DNA-binding transcription factor that activates many muscle-specific, growth factor-induced, and stress-induced genes. The encoded protein can act as a homodimer or as a heterodimer and is involved in several cellular processes, including muscle development, neuronal differentiation, cell growth control, and apoptosis. Defects in this gene could be a cause of autosomal dominant coronary artery disease 1 with myocardial infarction (ADCAD1). Several transcript variants encoding different isoforms have been found for this gene.

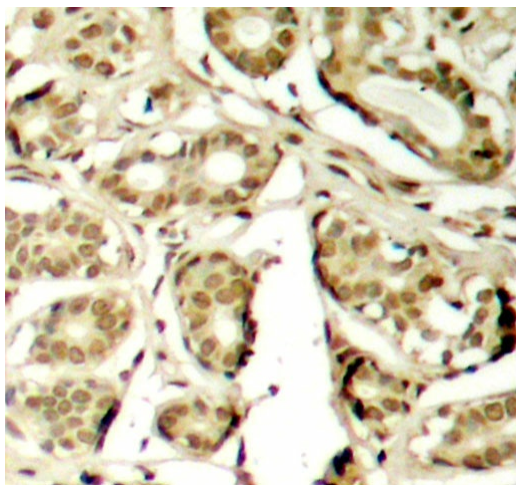


[View online »](#)

Synonyms: ADCAD1; mef2; RSRFC4; RSRFC9

Protein Families: Transcription Factors

**Product images:**



Immunohistochemistry of paraffin-embedded human breast carcinoma using Phospho-MEF2A-S408 antibody (TA333251). Perform microwave antigen retrieval with 10 mM Tris/EDTA buffer pH 9.0 before commencing with IHC staining protocol.