

Product datasheet for **TA333240**

Map2k5 Rabbit Polyclonal Antibody

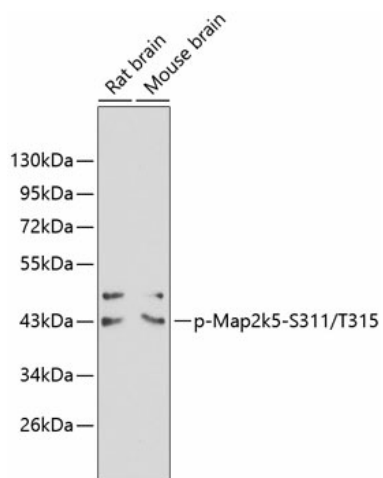
Product data:

Product Type:	Primary Antibodies
Applications:	WB
Recommended Dilution:	WB 1:500 - 1:2000
Reactivity:	Human, Mouse, Rat
Modifications:	Phospho-specific
Host:	Rabbit
Isotype:	IgG
Clonality:	Polyclonal
Immunogen:	A phospho specific peptide corresponding to residues surrounding S311/T315 of human Map2k5
Formulation:	Store at -20°C (regular) and -80°C (long term). Avoid freeze / thaw cycles. Buffer: PBS with 0.02% sodium azide, 50% glycerol, pH7.3.
Concentration:	lot specific
Purification:	Affinity purification
Conjugation:	Unconjugated
Storage:	Store at -20°C as received.
Stability:	Stable for 12 months from date of receipt.
Predicted Protein Size:	448
Gene Name:	mitogen activated protein kinase kinase 5
Database Link:	NP_058942 Entrez Gene 5607 HumanEntrez Gene 23938 MouseEntrez Gene 29568 Rat Q62862
Background:	kinase involved in signal transduction in the cell.
Synonyms:	HsT17454; MAPKK5; MEK5; MKK5; PRKMK5



[View online »](#)

Product images:



Western blot analysis of extracts from rat and mouse brain tissue using phospho-Map2k5-S311/T315 antibody (TA333240). | Secondary antibody: HRP Goat Anti-Rabbit IgG (H+L) at 1:10000 dilution. | Lysates/proteins: 25ug per lane. | Blocking buffer: 3% BSA.