

## Product datasheet for **TA333222S**

### JAK2 Rabbit Polyclonal Antibody

#### Product data:

Product Type:	Primary Antibodies
Applications:	WB
Recommended Dilution:	WB 1:500-1:2000
Reactivity:	Human, Mouse
Modifications:	Phospho-specific
Host:	Rabbit
Isotype:	IgG
Clonality:	Polyclonal
Immunogen:	A phospho specific peptide corresponding to residues surrounding Y1007 of human JAK2
Formulation:	Store at -20°C (regular) and -80°C (long term). Avoid freeze / thaw cycles. Buffer: PBS with 0.02% sodium azide, 50% glycerol, pH7.3.
Concentration:	lot specific
Purification:	Affinity purification
Conjugation:	Unconjugated
Storage:	Store at -20°C as received.
Stability:	Stable for 12 months from date of receipt.
Predicted Protein Size:	1132
Gene Name:	Janus kinase 2
Database Link:	<a href="#">NP_004963</a> <a href="#">Entrez Gene 16452 Mouse</a> <a href="#">Entrez Gene 3717 Human</a> <a href="#">O60674</a>
Background:	This gene product is a protein tyrosine kinase involved in a specific subset of cytokine receptor signaling pathways. It has been found to be constitutively associated with the prolactin receptor and is required for responses to gamma interferon. Mice that do not express an active protein for this gene exhibit embryonic lethality associated with the absence of definitive erythropoiesis.
Synonyms:	JTK10; THCYT3

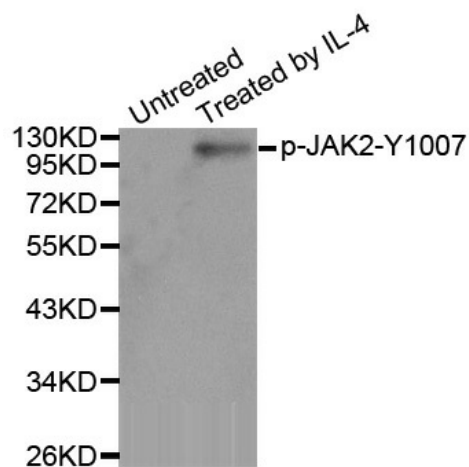


[View online »](#)

Protein Families: Druggable Genome, Protein Kinase

Protein Pathways: Adipocytokine signaling pathway, Chemokine signaling pathway, Jak-STAT signaling pathway

### Product images:



Western blot analysis of extracts from HT29 cells using Phospho-JAK2-Y1007 antibody.  
Immunohistochemical analysis of paraffin-embedded human breast carcinoma tissue using Phospho-JAK2-Y1007 antibody.