

## Product datasheet for **TA333218**

### IGF1 Receptor (IGF1R) Rabbit Polyclonal Antibody

#### Product data:

Product Type:	Primary Antibodies
Applications:	WB
Recommended Dilution:	WB 1:500 - 1:2000
Reactivity:	Human, Mouse, Rat
Modifications:	Phospho-specific
Host:	Rabbit
Isotype:	IgG
Clonality:	Polyclonal
Immunogen:	A phospho specific peptide corresponding to residues surrounding Y1280 of human IGF1R
Formulation:	Store at -20°C (regular) and -80°C (long term). Avoid freeze / thaw cycles. Buffer: PBS with 0.02% sodium azide, 50% glycerol, pH7.3.
Concentration:	lot specific
Purification:	Affinity purification
Conjugation:	Unconjugated
Storage:	Store at -20°C as received.
Stability:	Stable for 12 months from date of receipt.
Predicted Protein Size:	1367
Gene Name:	insulin like growth factor 1 receptor
Database Link:	<a href="#">NP_000866</a> <a href="#">Entrez Gene 16001 Mouse</a> <a href="#">Entrez Gene 25718 Rat</a> <a href="#">Entrez Gene 3480 Human</a> <a href="#">P08069</a>
Background:	This receptor binds insulin-like growth factor with a high affinity. It has tyrosine kinase activity. The insulin-like growth factor I receptor plays a critical role in transformation events. Cleavage of the precursor generates alpha and beta subunits. It is highly overexpressed in most malignant tissues where it functions as an anti-apoptotic agent by enhancing cell survival.
Synonyms:	CD221; IGFIR; IGFR; JTK13

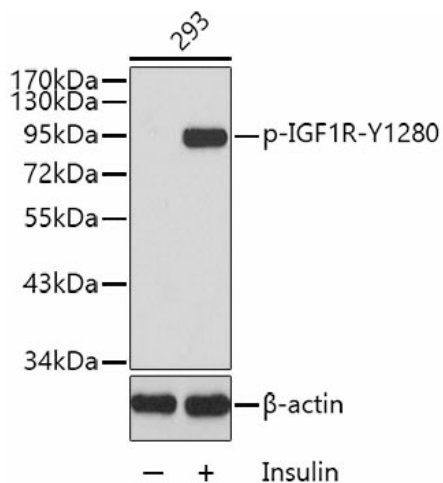


[View online »](#)

**Protein Families:** Druggable Genome, Protein Kinase, Transmembrane

**Protein Pathways:** Adherens junction, Colorectal cancer, Endocytosis, Focal adhesion, Glioma, Long-term depression, Melanoma, Oocyte meiosis, Pathways in cancer, Progesterone-mediated oocyte maturation, Prostate cancer

### Product images:



Western blot analysis of extract from 293 cells, using Phospho-IGF1R-Y1280 antibody (TA333218). | Secondary antibody: HRP Goat Anti-Rabbit IgG (H+L) at 1:10000 dilution. | Lysates/proteins: 25ug per lane. | Blocking buffer: 3% BSA.