

Product datasheet for **TA333217S**

IGF1 Receptor (IGF1R) Rabbit Polyclonal Antibody

Product data:

Product Type:	Primary Antibodies
Applications:	WB
Recommended Dilution:	WB 1:500-1:2000
Reactivity:	Human, Mouse, Rat
Modifications:	Phospho-specific
Host:	Rabbit
Isotype:	IgG
Clonality:	Polyclonal
Immunogen:	A phospho specific peptide corresponding to residues surrounding Y1161 of human IGF1R
Formulation:	Store at -20°C (regular) and -80°C (long term). Avoid freeze / thaw cycles. Buffer: PBS with 0.02% sodium azide, 50% glycerol, pH7.3.
Concentration:	lot specific
Purification:	Affinity purification
Conjugation:	Unconjugated
Storage:	Store at -20°C as received.
Stability:	Stable for 12 months from date of receipt.
Predicted Protein Size:	1367
Gene Name:	insulin like growth factor 1 receptor
Database Link:	NP_000866 Entrez Gene 16001 Mouse Entrez Gene 25718 Rat Entrez Gene 3480 Human P08069
Background:	This receptor binds insulin-like growth factor with a high affinity. It has tyrosine kinase activity. The insulin-like growth factor I receptor plays a critical role in transformation events. Cleavage of the precursor generates alpha and beta subunits. It is highly overexpressed in most malignant tissues where it functions as an anti-apoptotic agent by enhancing cell survival.
Synonyms:	CD221; IGFIR; IGFR; JTK13

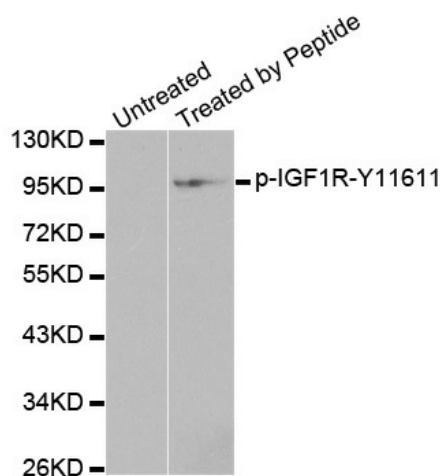


[View online »](#)

Protein Families: Druggable Genome, Protein Kinase, Transmembrane

Protein Pathways: Adherens junction, Colorectal cancer, Endocytosis, Focal adhesion, Glioma, Long-term depression, Melanoma, Oocyte meiosis, Pathways in cancer, Progesterone-mediated oocyte maturation, Prostate cancer

Product images:



Western blot analysis of extracts from 293 cells, using Phospho-IGF1R-Y1161 antibody.