

## Product datasheet for **TA333196S**

### EIF4EBP1 Rabbit Polyclonal Antibody

#### Product data:

Product Type:	Primary Antibodies
Applications:	WB
Recommended Dilution:	WB 1:500-1:2000
Reactivity:	Human, Mouse, Rat
Modifications:	Phospho-specific
Host:	Rabbit
Isotype:	IgG
Clonality:	Polyclonal
Immunogen:	A phospho specific peptide corresponding to residues surrounding T36 of human EIF4EBP1
Formulation:	Store at -20°C (regular) and -80°C (long term). Avoid freeze / thaw cycles. Buffer: PBS with 0.02% sodium azide, 50% glycerol, pH7.3.
Concentration:	lot specific
Purification:	Affinity purification
Conjugation:	Unconjugated
Storage:	Store at -20°C as received.
Stability:	Stable for 12 months from date of receipt.
Predicted Protein Size:	118
Gene Name:	eukaryotic translation initiation factor 4E binding protein 1
Database Link:	<a href="#">NP_004086</a> <a href="#">Entrez Gene 13685 Mouse</a> <a href="#">Entrez Gene 116636 Rat</a> <a href="#">Entrez Gene 1978 Human</a> <a href="#">Q13541</a>
Background:	This gene encodes one member of a family of translation repressor proteins. The protein directly interacts with eukaryotic translation initiation factor 4E (eIF4E), which is a limiting component of the multisubunit complex that recruits 40S ribosomal subunits to the 5' end of mRNAs. Interaction of this protein with eIF4E inhibits complex assembly and represses translation. This protein is phosphorylated in response to various signals including UV irradiation and insulin signaling, resulting in its dissociation from eIF4E and activation of mRNA translation.

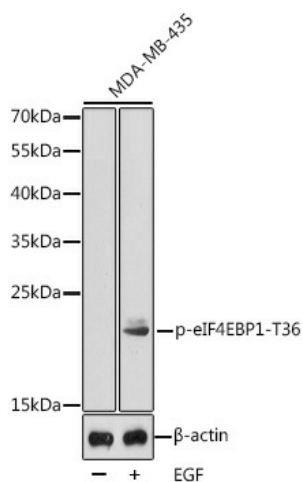


[View online »](#)

**Synonyms:** 4E-BP1; 4EBP1; BP-1; PHAS-I

**Protein Pathways:** Acute myeloid leukemia, ErbB signaling pathway, Insulin signaling pathway, mTOR signaling pathway

### Product images:



Western blot analysis of extracts from MDA-MB-435 cells, using Phospho-eIF4EBP1-T36 antibody ([TA333196]). |Secondary antibody: HRP Goat Anti-Rabbit IgG (H+L) at 1:10000 dilution. |Lysates/proteins: 25ug per lane. |Blocking buffer: 3% BSA.