

Product datasheet for **TA333182**

Cofilin 1 (CFL1) Rabbit Polyclonal Antibody

Product data:

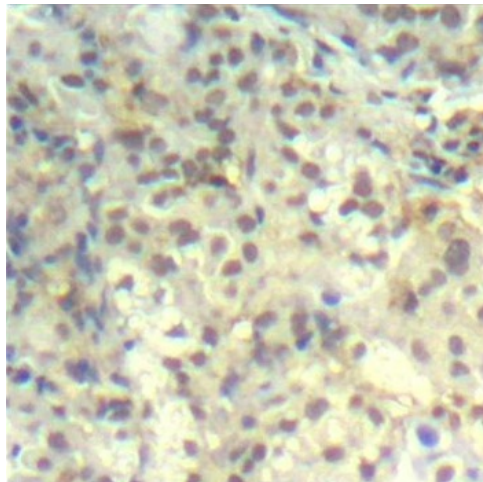
Product Type:	Primary Antibodies
Applications:	IHC
Recommended Dilution:	IHC 1:50-1:100
Reactivity:	Human, Mouse, Rat
Modifications:	Phospho-specific
Host:	Rabbit
Isotype:	IgG
Clonality:	Polyclonal
Immunogen:	A phospho specific peptide corresponding to residues surrounding Y139 of human CFL1
Formulation:	Store at -20°C (regular) and -80°C (long term). Avoid freeze / thaw cycles. Buffer: PBS with 0.02% sodium azide, 50% glycerol, pH7.3.
Concentration:	lot specific
Purification:	Affinity purification
Conjugation:	Unconjugated
Storage:	Store at -20°C as received.
Stability:	Stable for 12 months from date of receipt.
Predicted Protein Size:	166
Gene Name:	cofilin 1
Database Link:	NP_005498 Entrez Gene 12631 Mouse Entrez Gene 29271 Rat Entrez Gene 1072 Human P23528

Background: The protein encoded by this gene can polymerize and depolymerize F-actin and G-actin in a pH-dependent manner. Increased phosphorylation of this protein by LIM kinase aids in Rho-induced reorganization of the actin cytoskeleton. Cofilin is a widely distributed intracellular actin-modulating protein that binds and depolymerizes filamentous F-actin and inhibits the polymerization of monomeric G-actin in a pH-dependent manner. It is involved in the translocation of actin-cofilin complex from cytoplasm to nucleus.



[View online »](#)

Synonyms:	CFL; HEL-S-15
Protein Families:	Druggable Genome
Protein Pathways:	Axon guidance, Fc gamma R-mediated phagocytosis, Regulation of actin cytoskeleton

Product images:

Immunohistochemistry of paraffin-embedded human lung carcinoma using Phospho-CFL1-Y139 antibody (TA333182). Perform microwave antigen retrieval with 10 mM Tris/EDTA buffer pH 9.0 before commencing with IHC staining protocol.