

## Product datasheet for **TA333180S**

### CDK6 Rabbit Polyclonal Antibody

#### Product data:

Product Type:	Primary Antibodies
Applications:	ICC/IF, WB
Recommended Dilution:	WB 1:500-1:2000;IF 1:100-1:200
Reactivity:	Human, Mouse
Modifications:	Phospho-specific
Host:	Rabbit
Isotype:	IgG
Clonality:	Polyclonal
Immunogen:	A phospho specific peptide corresponding to residues surrounding Y13 of human CDK6
Formulation:	Store at -20°C (regular) and -80°C (long term). Avoid freeze / thaw cycles. Buffer: PBS with 0.02% sodium azide, 50% glycerol, pH7.3.
Concentration:	lot specific
Purification:	Affinity purification
Conjugation:	Unconjugated
Storage:	Store at -20°C as received.
Stability:	Stable for 12 months from date of receipt.
Predicted Protein Size:	326
Gene Name:	cyclin-dependent kinase 6
Database Link:	<a href="#">NP_001250</a> <a href="#">Entrez Gene 12571 Mouse</a> <a href="#">Entrez Gene 1021 Human</a> <a href="#">Q00534</a>



[View online »](#)

**Background:**

The protein encoded by this gene is a member of the cyclin-dependent protein kinase (CDK) family. CDK family members are highly similar to the gene products of *Saccharomyces cerevisiae* cdc28, and *Schizosaccharomyces pombe* cdc2, and are known to be important regulators of cell cycle progression. This kinase is a catalytic subunit of the protein kinase complex that is important for cell cycle G1 phase progression and G1/S transition. The activity of this kinase first appears in mid-G1 phase, which is controlled by the regulatory subunits including D-type cyclins and members of INK4 family of CDK inhibitors. This kinase, as well as CDK4, has been shown to phosphorylate, and thus regulate the activity of, tumor suppressor protein Rb. Expression of this gene is up-regulated in some types of cancer. Multiple alternatively spliced variants, encoding the same protein, have been identified.

**Synonyms:**

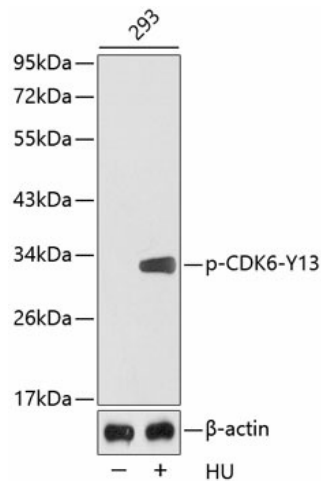
MCPH12; PLSTIRE

**Protein Families:**

Druggable Genome, Protein Kinase

**Protein Pathways:**

Cell cycle, Chronic myeloid leukemia, Glioma, Melanoma, Non-small cell lung cancer, p53 signaling pathway, Pancreatic cancer, Pathways in cancer, Small cell lung cancer

**Product images:**

Western blot analysis of extracts from 293 cells using Phospho-CDK6-Y13 antibody ([TA333180]). |Secondary antibody: HRP Goat Anti-Rabbit IgG (H+L) at 1:10000 dilution. |Lysates/proteins: 25ug per lane. |Blocking buffer: 3% BSA.