

Product datasheet for TA333173S

PRMT4 (CARM1) Rabbit Polyclonal Antibody

Product data:

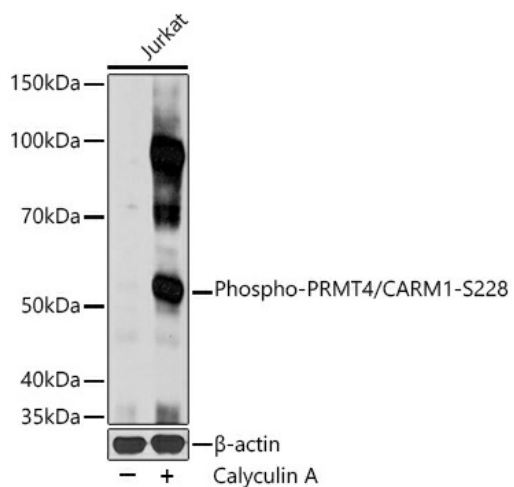
Product Type:	Primary Antibodies
Applications:	ELISA, WB
Recommended Dilution:	WB, 1:500 - 1:1000 ELISA, Recommended starting concentration is 1 µg/mL. Please optimize the concentration based on your specific assay requirements.
Reactivity:	Human
Modifications:	Phospho-specific
Host:	Rabbit
Isotype:	IgG
Clonality:	Polyclonal
Formulation:	Store at -20°C (regular) and -80°C (long term). Avoid freeze / thaw cycles. Buffer: PBS with 0.02% sodium azide, 50% glycerol, pH7.3.
Concentration:	lot specific
Purification:	Affinity purification
Conjugation:	Unconjugated
Storage:	Store at -20°C. Avoid freeze / thaw cycles.
Stability:	Stable for 12 months from date of receipt.
Predicted Protein Size:	66kDa
Gene Name:	coactivator associated arginine methyltransferase 1
Database Link:	NP_954592 Entrez Gene 10498 Human Q86X55
Background:	This gene belongs to the protein arginine methyltransferase (PRMT) family. The encoded enzyme catalyzes the methylation of guanidino nitrogens of arginyl residues of proteins. The enzyme acts specifically on histones and other chromatin-associated proteins and is involved in regulation of gene expression. The enzyme may act in association with other proteins or within multi-protein complexes and may play a role in cell type-specific functions and cell lineage specification. A related pseudogene is located on chromosome 9.


[View online »](#)

Synonyms: PRMT4

Protein Families: Druggable Genome, Transcription Factors

Product images:



Western blot analysis of lysates from Jurkat cells