

Product datasheet for **TA333137**

alpha 1 Catenin (CTNNA1) Rabbit Polyclonal Antibody

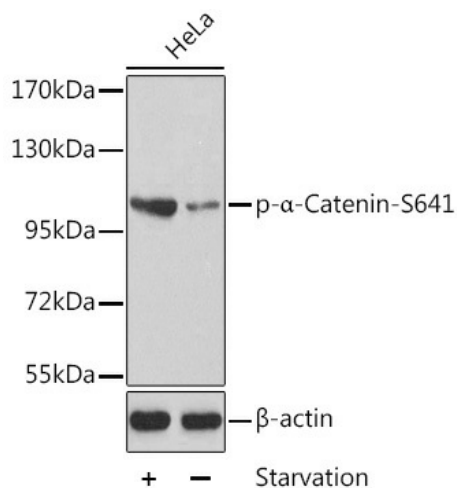
Product data:

Product Type:	Primary Antibodies
Applications:	WB
Recommended Dilution:	WB 1:500 - 1:2000
Reactivity:	Human, Mouse
Modifications:	Phospho-specific
Host:	Rabbit
Isotype:	IgG
Clonality:	Polyclonal
Immunogen:	A phospho specific peptide corresponding to residues surrounding S641 of human CTNNA1
Formulation:	Store at -20°C (regular) and -80°C (long term). Avoid freeze / thaw cycles. Buffer: PBS with 0.02% sodium azide, 50% glycerol, pH7.3.
Concentration:	lot specific
Purification:	Affinity purification
Conjugation:	Unconjugated
Storage:	Store at -20°C as received.
Stability:	Stable for 12 months from date of receipt.
Predicted Protein Size:	906
Gene Name:	catenin alpha 1
Database Link:	NP_001894 Entrez Gene 12385 Mouse Entrez Gene 1495 Human P35221
Synonyms:	CAP102; MDPT2
Protein Families:	Druggable Genome
Protein Pathways:	Adherens junction, Arrhythmogenic right ventricular cardiomyopathy (ARVC), Endometrial cancer, Leukocyte transendothelial migration, Pathways in cancer, Tight junction



[View online »](#)

Product images:



Western blot analysis of extracts from HeLa cells using Phospho- α -Catenin-S641 antibody (TA333137). | Secondary antibody: HRP Goat Anti-Rabbit IgG (H+L) at 1:10000 dilution. | Lysates/proteins: 25ug per lane. | Blocking buffer: 3% BSA.