

## Product datasheet for **TA333121S**

### Camk2a Rabbit Polyclonal Antibody

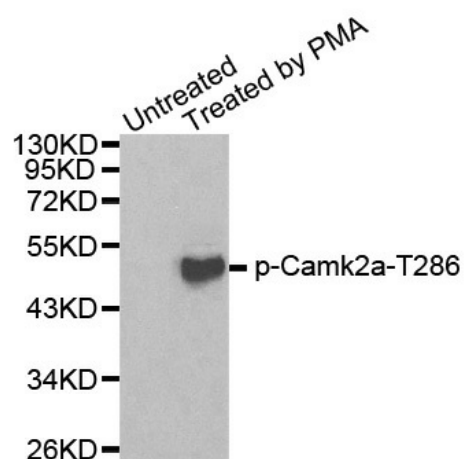
#### Product data:

Product Type:	Primary Antibodies
Applications:	WB
Recommended Dilution:	WB 1:500 - 1:2000
Reactivity:	Human, Mouse, Rat
Modifications:	Phospho-specific
Host:	Rabbit
Isotype:	IgG
Clonality:	Polyclonal
Immunogen:	A phospho specific peptide corresponding to residues surrounding T286 of human Camk2a
Formulation:	Store at -20°C (regular) and -80°C (long term). Avoid freeze / thaw cycles. Buffer: PBS with 0.02% sodium azide, 50% glycerol, pH7.3.
Concentration:	lot specific
Purification:	Affinity purification
Conjugation:	Unconjugated
Storage:	Store at -20°C as received.
Stability:	Stable for 12 months from date of receipt.
Predicted Protein Size:	478
Gene Name:	calcium/calmodulin-dependent protein kinase II alpha
Database Link:	<a href="#">NP_033922</a> <a href="#">Entrez Gene 815 Human</a> <a href="#">Entrez Gene 25400 Rat</a> <a href="#">Entrez Gene 12322 Mouse</a> <a href="#">P11798</a>
Synonyms:	CAMKA; CaMKIINalpha; KIAA0968



[View online »](#)

## Product images:



Western blot analysis of extracts from 293 cells using Phospho-Camk2a-Thr286 antibody.