

## Product datasheet for **TA333100**

### CDK1 Rabbit Polyclonal Antibody

#### Product data:

Product Type:	Primary Antibodies
Applications:	WB
Recommended Dilution:	WB 1:500 - 1:2000
Reactivity:	Human, Mouse, Rat
Modifications:	Phospho-specific
Host:	Rabbit
Isotype:	IgG
Clonality:	Polyclonal
Immunogen:	A phospho specific peptide corresponding to residues surrounding Y15 of human CDK1
Formulation:	Store at -20°C (regular) and -80°C (long term). Avoid freeze / thaw cycles. Buffer: PBS with 0.02% sodium azide, 50% glycerol, pH7.3.
Concentration:	lot specific
Purification:	Affinity purification
Conjugation:	Unconjugated
Storage:	Store at -20°C as received.
Stability:	Stable for 12 months from date of receipt.
Predicted Protein Size:	297
Gene Name:	cyclin-dependent kinase 1
Database Link:	<a href="#">NP_001777</a> <a href="#">Entrez Gene 12534 Mouse</a> <a href="#">Entrez Gene 54237 Rat</a> <a href="#">Entrez Gene 983 Human</a> <a href="#">P06493</a>



[View online »](#)

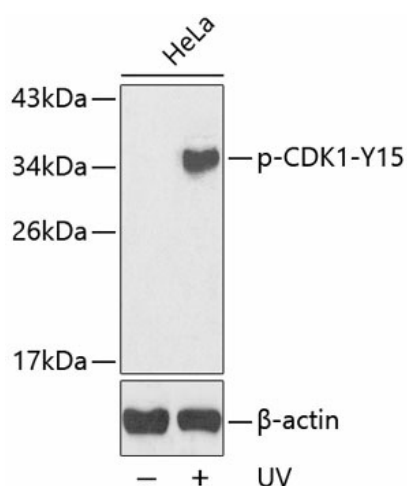
**Background:** The protein encoded by this gene is a member of the Ser/Thr protein kinase family. This protein is a catalytic subunit of the highly conserved protein kinase complex known as M-phase promoting factor (MPF), which is essential for G1/S and G2/M phase transitions of eukaryotic cell cycle. Mitotic cyclins stably associate with this protein and function as regulatory subunits. The kinase activity of this protein is controlled by cyclin accumulation and destruction through the cell cycle. The phosphorylation and dephosphorylation of this protein also play important regulatory roles in cell cycle control. Alternatively spliced transcript variants encoding different isoforms have been found for this gene.

**Synonyms:** CDC2; CDC28A; P34CDC2

**Protein Families:** Druggable Genome, Protein Kinase, Stem cell - Pluripotency

**Protein Pathways:** Cell cycle, Gap junction, Oocyte meiosis, p53 signaling pathway, Progesterone-mediated oocyte maturation

### Product images:



Western blot analysis of extracts from HeLa cells, using Phospho-CDK1-Y15 antibody (TA333100). | Secondary antibody: HRP Goat Anti-Rabbit IgG (H+L) at 1:10000 dilution. | Lysates/proteins: 25ug per lane. | Blocking buffer: 3% BSA.