

Product datasheet for **TA332980S**

VASH1 Rabbit Polyclonal Antibody

Product data:

Product Type:	Primary Antibodies
Applications:	ELISA, WB
Recommended Dilution:	WB, 1:500 - 1:2000 ELISA, Recommended starting concentration is 1 µg/mL. Please optimize the concentration based on your specific assay requirements.
Reactivity:	Human, Mouse
Host:	Rabbit
Isotype:	IgG
Clonality:	Polyclonal
Formulation:	Store at -20°C (regular) and -80°C (long term). Avoid freeze / thaw cycles. Buffer: PBS with 0.02% sodium azide, 50% glycerol, pH7.3.
Concentration:	lot specific
Purification:	Affinity purification
Conjugation:	Unconjugated
Storage:	Store at -20°C. Avoid freeze / thaw cycles.
Stability:	Stable for 12 months from date of receipt.
Predicted Protein Size:	41kDa
Gene Name:	vasohibin 1
Database Link:	NP_055724 Entrez Gene 238328 Mouse Entrez Gene 22846 Human Q7L8A9
Background:	Enables actin binding activity and metallopeptidase activity. Involved in negative regulation of angiogenesis; negative regulation of blood vessel endothelial cell migration; and proteolysis. Acts upstream of or within several processes, including negative regulation of endothelial cell migration; negative regulation of endothelial cell proliferation; and negative regulation of lymphangiogenesis. Located in apical part of cell; endoplasmic reticulum; and extracellular space. Implicated in liver cirrhosis and portal hypertension. Biomarker of liver cirrhosis.

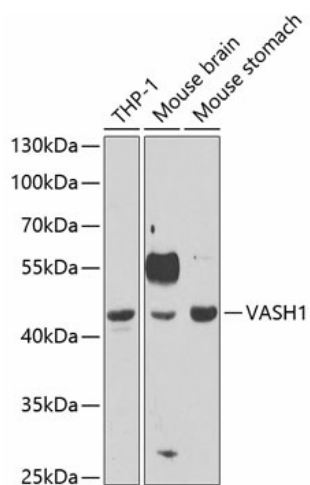


[View online »](#)

Synonyms: KIAA1036

Protein Families: Secreted Protein

Product images:



Western blot analysis of various lysates using VASH1 Rabbit pAb ([TA332980]) at 1:1000 dilution.

Secondary antibody: HRP-conjugated Goat anti-Rabbit IgG (H+L) (AS014) at 1:10000 dilution.

Lysates/proteins: 25µg per lane.

Blocking buffer: 3% nonfat dry milk in TBST.

Detection: ECL Basic Kit (RM00020).

Exposure time: 90s.