

Product datasheet for TA332979S

SETDB1 Rabbit Polyclonal Antibody

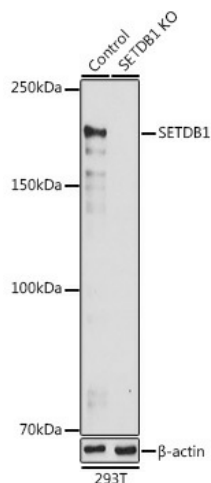
Product data:

Product Type:	Primary Antibodies
Applications:	ELISA, WB
Recommended Dilution:	WB, 1:500 - 1:1000 ELISA, Recommended starting concentration is 1 µg/mL. Please optimize the concentration based on your specific assay requirements.
Reactivity:	Human, Mouse, Rat
Host:	Rabbit
Isotype:	IgG
Clonality:	Polyclonal
Formulation:	PBS with 0.05% proclin300, 50% glycerol, pH7.3.
Concentration:	lot specific
Purification:	Affinity purification
Conjugation:	Unconjugated
Storage:	Store at -20°C. Avoid freeze / thaw cycles.
Stability:	Stable for 12 months from date of receipt.
Predicted Protein Size:	143kDa
Gene Name:	SET domain bifurcated 1
Database Link:	NP_036564 Entrez Gene 84505 Mouse Entrez Gene 689883 Rat Entrez Gene 9869 Human Q15047
Background:	This gene encodes a histone methyltransferase which regulates histone methylation, gene silencing, and transcriptional repression. This gene has been identified as a target for treatment in Huntington Disease, given that gene silencing and transcription dysfunction likely play a role in the disease pathogenesis. Alternatively spliced transcript variants of this gene have been described.
Synonyms:	ESET; H3-K9-HMTase4; KG1T; KMT1E; TDRD21
Protein Families:	Druggable Genome

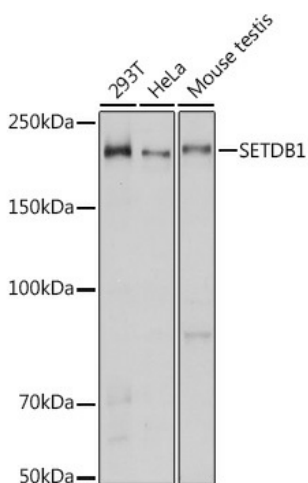

[View online »](#)

Protein Pathways: Lysine degradation

Product images:



Western blot analysis of lysates from wild type (WT) and SETDB1 knockout (KO) 293T cells



Western blot analysis of various lysates using [KO Validated] SETDB1 Rabbit pAb ([TA332979]) at 1:1000 dilution.

Secondary antibody: HRP-conjugated Goat anti-Rabbit IgG (H+L) (AS014) at 1:10000 dilution.

Lysates/proteins: 25μg per lane.

Blocking buffer: 3% nonfat dry milk in TBST.

Detection: ECL Basic Kit (RM00020).

Exposure time: 3s.