

Product datasheet for **TA332979**

SETDB1 Rabbit Polyclonal Antibody

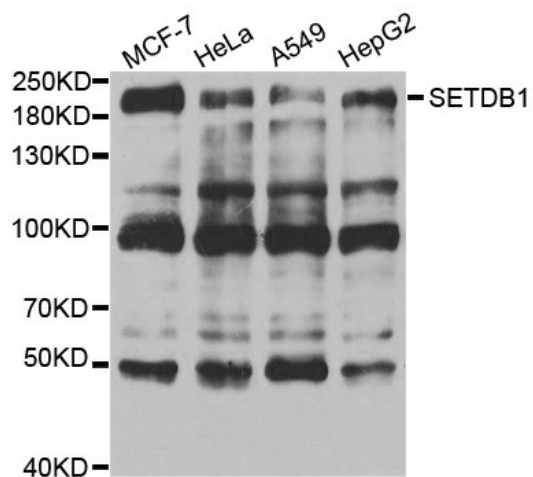
Product data:

Product Type:	Primary Antibodies
Applications:	WB
Recommended Dilution:	WB 1:500 - 1:2000
Reactivity:	Human, Mouse, Rat
Host:	Rabbit
Isotype:	IgG
Clonality:	Polyclonal
Immunogen:	Recombinant protein of human SETDB1
Formulation:	Store at -20°C (regular) and -80°C (long term). Avoid freeze / thaw cycles. Buffer: PBS with 0.02% sodium azide, 50% glycerol, pH7.3.
Concentration:	lot specific
Purification:	Affinity purification
Conjugation:	Unconjugated
Storage:	Store at -20°C as received.
Stability:	Stable for 12 months from date of receipt.
Gene Name:	SET domain bifurcated 1
Database Link:	NP_036564 Entrez Gene 84505 Mouse Entrez Gene 689883 Rat Entrez Gene 9869 Human Q15047
Background:	This gene encodes a histone methyltransferase which regulates histone methylation, gene silencing, and transcriptional repression. This gene has been identified as a target for treatment in Huntington Disease, given that gene silencing and transcription dysfunction likely play a role in the disease pathogenesis. Alternatively spliced transcript variants of this gene have been described.
Synonyms:	ESET; H3-K9-HMTase4; KG1T; KMT1E; TDRD21
Protein Families:	Druggable Genome
Protein Pathways:	Lysine degradation



[View online »](#)

Product images:



Western blot analysis of extracts of various cell lines, using SETDB1 antibody.