

Product datasheet for **TA332978S**

SMARCC1 Rabbit Polyclonal Antibody

Product data:

Product Type:	Primary Antibodies
Applications:	ELISA, IP, WB
Recommended Dilution:	WB, 1:500 - 1:1000 IP, 0.5µg-4µg antibody for 200µg-400µg extracts of whole cells ELISA, Recommended starting concentration is 1 µg/mL. Please optimize the concentration based on your specific assay requirements.
Reactivity:	Human
Host:	Rabbit
Isotype:	IgG
Clonality:	Polyclonal
Formulation:	Store at -20°C (regular) and -80°C (long term). Avoid freeze / thaw cycles. Buffer: PBS with 0.02% sodium azide, 50% glycerol, pH7.3.
Concentration:	lot specific
Purification:	Affinity purification
Conjugation:	Unconjugated
Storage:	Store at -20°C. Avoid freeze / thaw cycles.
Stability:	Stable for 12 months from date of receipt.
Predicted Protein Size:	123kDa
Gene Name:	SWI/SNF related, matrix associated, actin dependent regulator of chromatin subfamily c member 1
Database Link:	NP_003065 Entrez Gene 6599 Human Q92922
Background:	The protein encoded by this gene is a member of the SWI/SNF family of proteins, whose members display helicase and ATPase activities and which are thought to regulate transcription of certain genes by altering the chromatin structure around those genes. The encoded protein is part of the large ATP-dependent chromatin remodeling complex SNF/SWI and contains a predicted leucine zipper motif typical of many transcription factors.

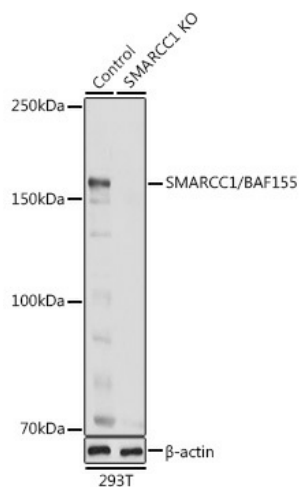


[View online »](#)

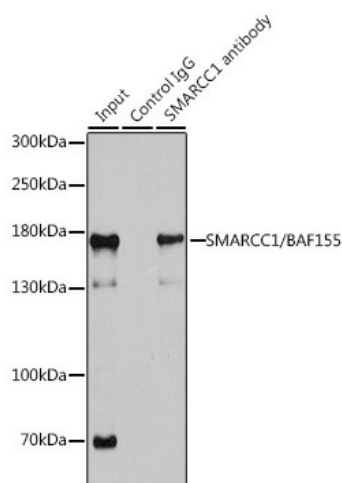
Synonyms: BAF155; CRACC1; Rsc8; SRG3; SWI3

Protein Families: Stem cell - Pluripotency, Transcription Factors

Product images:



Western blot analysis of lysates from wild type (WT) and SMARCC1/BAF155 knockout (KO) 293T cells



Immunoprecipitation analysis of 200 µg extracts of 293T cells using 1 µg SMARCC1/BAF155 antibody ([TA332978]). Western blot was performed from the immunoprecipitate using SMARCC1/BAF155 antibody ([TA332978]) at a dilution of 1:1000.