

## Product datasheet for **TA332978**

### SMARCC1 Rabbit Polyclonal Antibody

#### Product data:

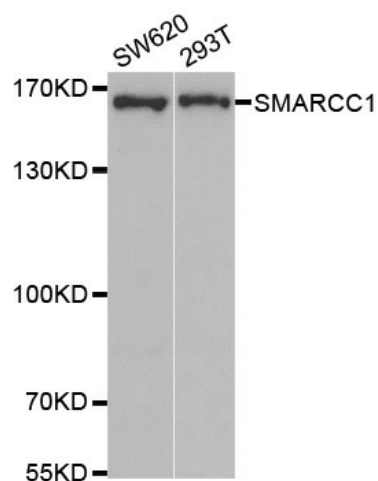
Product Type:	Primary Antibodies
Applications:	IP, WB
Recommended Dilution:	WB 1:500 - 1:2000;IP 1:50 - 1:200
Reactivity:	Human
Host:	Rabbit
Isotype:	IgG
Clonality:	Polyclonal
Immunogen:	Recombinant protein of human SMARCC1
Formulation:	Store at -20°C (regular) and -80°C (long term). Avoid freeze / thaw cycles. Buffer: PBS with 0.02% sodium azide, 50% glycerol, pH7.3.
Concentration:	lot specific
Purification:	Affinity purification
Conjugation:	Unconjugated
Storage:	Store at -20°C as received.
Stability:	Stable for 12 months from date of receipt.
Predicted Protein Size:	1105
Gene Name:	SWI/SNF related, matrix associated, actin dependent regulator of chromatin subfamily c member 1
Database Link:	<a href="#">NP_003065</a> <a href="#">Entrez Gene 6599 Human</a> <a href="#">Q92922</a>
Background:	The protein encoded by this gene is a member of the SWI/SNF family of proteins, whose members display helicase and ATPase activities and which are thought to regulate transcription of certain genes by altering the chromatin structure around those genes. The encoded protein is part of the large ATP-dependent chromatin remodeling complex SNF/SWI and contains a predicted leucine zipper motif typical of many transcription factors.
Synonyms:	BAF155; CRACC1; Rsc8; SRG3; SWI3



[View online »](#)

Protein Families: Stem cell - Pluripotency, Transcription Factors

**Product images:**



Western blot analysis of extracts of various cell lines, using SMARCC1 antibody.