

Product datasheet for **TA332974S**

AARE (APEH) Rabbit Polyclonal Antibody

Product data:

Product Type:	Primary Antibodies
Applications:	ELISA, IP, WB
Recommended Dilution:	WB, 1:500 - 1:1000 IP, 0.5µg-4µg antibody for 200µg-400µg extracts of whole cells ELISA, Recommended starting concentration is 1 µg/mL. Please optimize the concentration based on your specific assay requirements.
Reactivity:	Human, Mouse, Rat
Host:	Rabbit
Isotype:	IgG
Clonality:	Polyclonal
Formulation:	Store at -20°C (regular) and -80°C (long term). Avoid freeze / thaw cycles. Buffer: PBS with 0.02% sodium azide, 50% glycerol, pH7.3.
Concentration:	lot specific
Purification:	Affinity purification
Conjugation:	Unconjugated
Storage:	Store at -20°C. Avoid freeze / thaw cycles.
Stability:	Stable for 12 months from date of receipt.
Predicted Protein Size:	81kDa
Gene Name:	acylaminoacyl-peptide hydrolase
Database Link:	NP_001631 Entrez Gene 24206 Rat Entrez Gene 235606 Mouse Entrez Gene 327 Human P13798



[View online »](#)

Background:

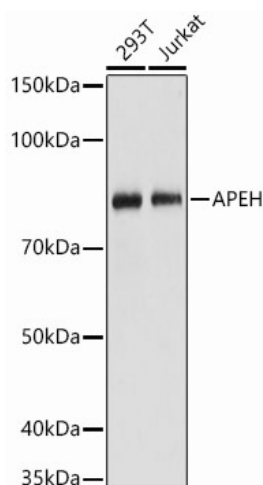
This gene encodes the enzyme acylpeptide hydrolase, which catalyzes the hydrolysis of the terminal acetylated amino acid preferentially from small acetylated peptides. The acetyl amino acid formed by this hydrolase is further processed to acetate and a free amino acid by an aminoacylase. This gene is located within the same region of chromosome 3 (3p21) as the aminoacylase gene, and deletions at this locus are also associated with a decrease in aminoacylase activity. The acylpeptide hydrolase is a homotetrameric protein of 300 kDa with each subunit consisting of 732 amino acid residues. It can play an important role in destroying oxidatively damaged proteins in living cells. Deletions of this gene locus are found in various types of carcinomas, including small cell lung carcinoma and renal cell carcinoma.

Synonyms:

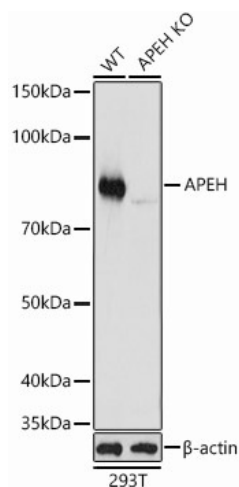
AARE; ACPH; APH; D3F15S2; D3S48E; DNF15S2; OPH

Protein Families:

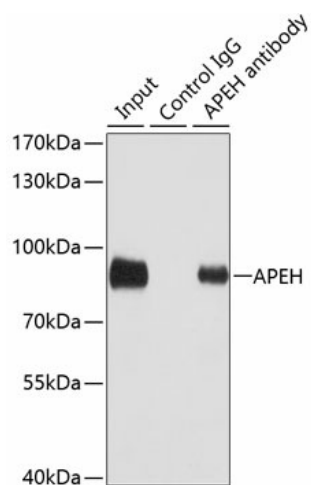
Druggable Genome, Protease

Product images:


Western blot analysis of various lysates



Western blot analysis of lysates from wild type(WT) and APEH knockout (KO) 293T(KO) cells



Immunoprecipitation analysis of 100 µg extracts of SW480 cells using 3 µg APEH antibody ([TA332974]). Western blot was performed from the immunoprecipitate using APEH antibody ([TA332974]) at a dilution of 1:1000.