

## Product datasheet for **TA332974**

### AARE (APEH) Rabbit Polyclonal Antibody

#### Product data:

Product Type:	Primary Antibodies
Applications:	IP, WB
Recommended Dilution:	WB 1:500 - 1:2000
Reactivity:	Human, Mouse, Rat
Host:	Rabbit
Isotype:	IgG
Clonality:	Polyclonal
Immunogen:	Recombinant protein of human APEH
Formulation:	Store at -20°C (regular) and -80°C (long term). Avoid freeze / thaw cycles. Buffer: PBS with 0.02% sodium azide, 50% glycerol, pH7.3.
Concentration:	lot specific
Purification:	Affinity purification
Conjugation:	Unconjugated
Storage:	Store at -20°C as received.
Stability:	Stable for 12 months from date of receipt.
Predicted Protein Size:	81 kDa
Gene Name:	acylaminoacyl-peptide hydrolase
Database Link:	<a href="#">NP_001631</a> <a href="#">Entrez Gene 24206 Rat</a> <a href="#">Entrez Gene 235606 Mouse</a> <a href="#">Entrez Gene 327 Human</a> <a href="#">P13798</a>



[View online »](#)

**Background:**

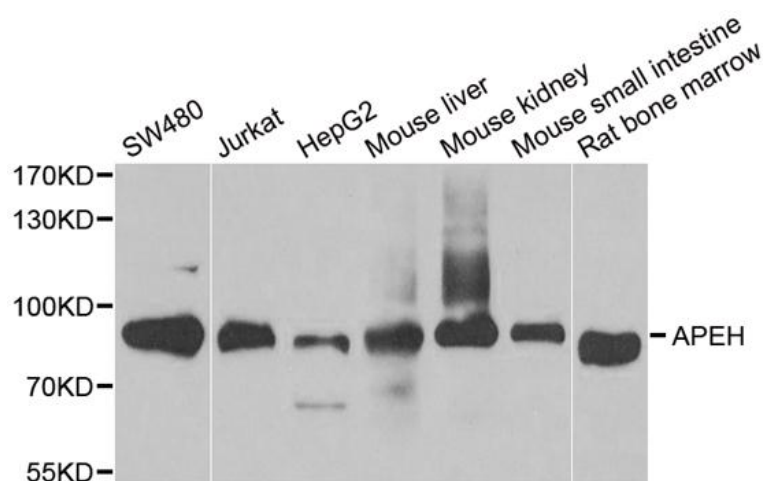
This gene encodes the enzyme acylpeptide hydrolase, which catalyzes the hydrolysis of the terminal acetylated amino acid preferentially from small acetylated peptides. The acetyl amino acid formed by this hydrolase is further processed to acetate and a free amino acid by an aminoacylase. This gene is located within the same region of chromosome 3 (3p21) as the aminoacylase gene, and deletions at this locus are also associated with a decrease in aminoacylase activity. The acylpeptide hydrolase is a homotetrameric protein of 300 kDa with each subunit consisting of 732 amino acid residues. It can play an important role in destroying oxidatively damaged proteins in living cells. Deletions of this gene locus are found in various types of carcinomas, including small cell lung carcinoma and renal cell carcinoma.

**Synonyms:**

AARE; ACPH; APH; D3F15S2; D3S48E; DNF15S2; OPH

**Protein Families:**

Druggable Genome, Protease

**Product images:**

Western blot analysis of extracts of various cell lines, using APEH antibody.