

## Product datasheet for **TA332973S**

### LSM4 Rabbit Polyclonal Antibody

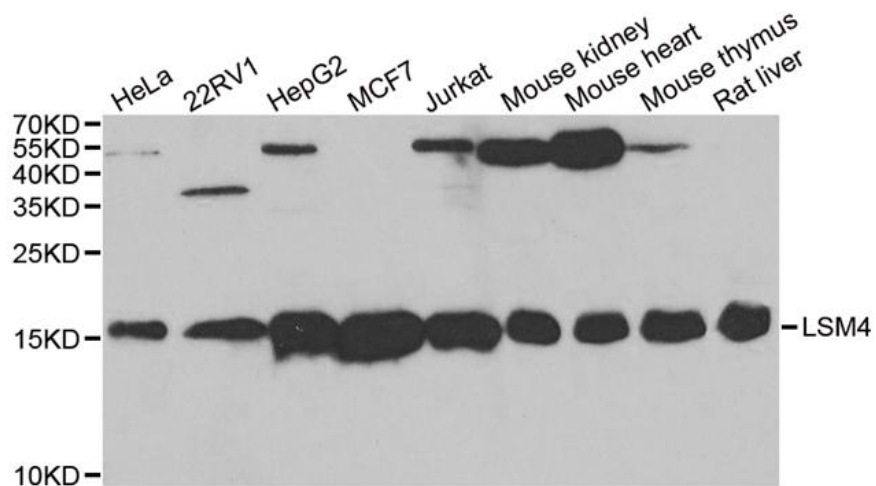
#### Product data:

|                         |  |
|-------------------------|--|
| Product Type:           | Primary Antibodies   |
| Applications:           | IP, WB   |
| Recommended Dilution:   | WB 1:500 - 1:2000  |
| Reactivity:             | Human, Mouse, Rat  |
| Host:                   | Rabbit   |
| Isotype:                | IgG  |
| Clonality:              | Polyclonal   |
| Immunogen:              | Recombinant protein of human LSM4  |
| Formulation:            | Store at -20°C (regular) and -80°C (long term). Avoid freeze / thaw cycles. Buffer: PBS with 0.02% sodium azide, 50% glycerol, pH7.3.  |
| Concentration:          | lot specific   |
| Purification:           | Affinity purification  |
| Conjugation:            | Unconjugated   |
| Storage:                | Store at -20°C as received.  |
| Stability:              | Stable for 12 months from date of receipt.   |
| Predicted Protein Size: | 15 kDa   |
| Gene Name:              | LSM4 homolog, U6 small nuclear RNA and mRNA degradation associated   |
| Database Link:          | <a href="#">NP_036453</a><br><a href="#">Entrez Gene 50783 MouseEntrez Gene 290647 RatEntrez Gene 25804 Human Q9Y4Z0</a>   |
| Background:             | This gene encodes a member of the LSm family of RNA-binding proteins. LSm proteins form stable heteromers that bind specifically to the 3'-terminal oligo(U) tract of U6 snRNA and may play a role in pre-mRNA splicing by mediating U4/U6 snRNP formation. Alternatively spliced transcript variants encoding multiple isoforms have been observed for this gene. |
| Synonyms:               | GRP; YER112W   |
| Protein Families:       | Stem cell - Pluripotency   |
| Protein Pathways:       | RNA degradation, Spliceosome   |



[View online »](#)

## Product images:



Western blot analysis of extracts of various cell lines, using LSM4 antibody.