

## Product datasheet for **TA332971S**

### Plzf (ZBTB16) Rabbit Polyclonal Antibody

#### Product data:

Product Type:	Primary Antibodies
Applications:	IHC, WB
Recommended Dilution:	WB 1:500 - 1:2000
Reactivity:	Human, Mouse, Rat
Host:	Rabbit
Isotype:	IgG
Clonality:	Polyclonal
Immunogen:	Recombinant protein of human ZBTB16
Formulation:	PBS with 0.05% proclin300,50% glycerol,pH7.3.
Concentration:	lot specific
Purification:	Affinity purification
Conjugation:	Unconjugated
Storage:	Store at -20°C as received.
Stability:	Stable for 12 months from date of receipt.
Predicted Protein Size:	673
Gene Name:	zinc finger and BTB domain containing 16
Database Link:	<a href="#">NP_005997</a> <a href="#">Entrez Gene 235320</a> <a href="#">MouseEntrez Gene 353227</a> <a href="#">RatEntrez Gene 7704</a> <a href="#">Human Q05516</a>

**Background:** This gene is a member of the Krueppel C2H2-type zinc-finger protein family and encodes a zinc finger transcription factor that contains nine Kruppel-type zinc finger domains at the carboxyl terminus. This protein is located in the nucleus, is involved in cell cycle progression, and interacts with a histone deacetylase. Specific instances of aberrant gene rearrangement at this locus have been associated with acute promyelocytic leukemia (APL). Alternate transcriptional splice variants have been characterized.

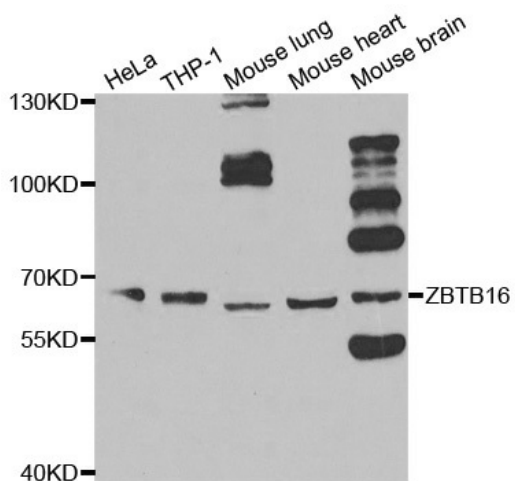
**Synonyms:** PLZF; ZNF145  
**Protein Families:** Druggable Genome, Transcription Factors



[View online »](#)

Protein Pathways: Acute myeloid leukemia, Pathways in cancer

### Product images:



Western blot analysis of extracts of various cell lines, using ZBTB16 antibody.