

## Product datasheet for TA332969S

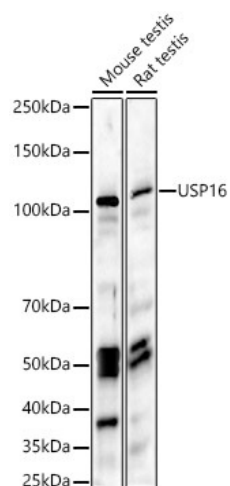
### USP16 Rabbit Polyclonal Antibody

#### Product data:

Product Type:	Primary Antibodies
Applications:	ELISA, WB
Recommended Dilution:	WB, 1:500 - 1:1000 ELISA, Recommended starting concentration is 1 µg/mL. Please optimize the concentration based on your specific assay requirements.
Reactivity:	Human, Mouse, Rat, Monkey
Host:	Rabbit
Isotype:	IgG
Clonality:	Polyclonal
Formulation:	Store at -20°C (regular) and -80°C (long term). Avoid freeze / thaw cycles. Buffer: PBS with 0.02% sodium azide, 50% glycerol, pH7.3.
Concentration:	lot specific
Purification:	Affinity purification
Conjugation:	Unconjugated
Storage:	Store at -20°C. Avoid freeze / thaw cycles.
Stability:	Stable for 12 months from date of receipt.
Predicted Protein Size:	94kDa
Gene Name:	ubiquitin specific peptidase 16
Database Link:	<a href="#">NP_006438</a> <a href="#">Entrez Gene 74112 Mouse</a> <a href="#">Entrez Gene 288306 Rat</a> <a href="#">Entrez Gene 10600 Human</a> <a href="#">Q9Y5T5</a>
Background:	This gene encodes a deubiquitinating enzyme that is phosphorylated at the onset of mitosis and then dephosphorylated at the metaphase/anaphase transition. It can deubiquitinate H2A, one of two major ubiquitinated proteins of chromatin, in vitro and a mutant form of the protein was shown to block cell division. Alternate transcriptional splice variants, encoding different isoforms, have been characterized.
Synonyms:	UBP-M; UBPM
Protein Families:	Protease


[View online »](#)

## Product images:



Western blot analysis of various lysates