

## Product datasheet for **TA332967S**

### **NPR2L (NPRL2) Rabbit Polyclonal Antibody**

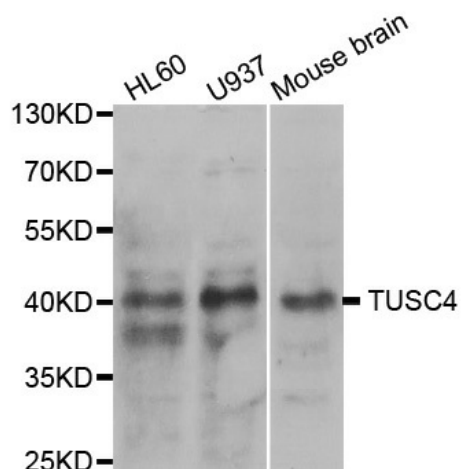
#### **Product data:**

Product Type:	Primary Antibodies
Applications:	ICC/IF, WB
Recommended Dilution:	WB 1:500 - 1:2000;IF 1:50- 1:200
Reactivity:	Human, Mouse, Rat
Host:	Rabbit
Isotype:	IgG
Clonality:	Polyclonal
Immunogen:	Recombinant protein of human NPRL2
Formulation:	Store at -20°C (regular) and -80°C (long term). Avoid freeze / thaw cycles. Buffer: PBS with 0.02% sodium azide, 50% glycerol, pH7.3.
Concentration:	lot specific
Purification:	Affinity purification
Conjugation:	Unconjugated
Storage:	Store at -20°C as received.
Stability:	Stable for 12 months from date of receipt.
Predicted Protein Size:	380
Gene Name:	NPR2-like, GATOR1 complex subunit
Database Link:	<a href="#">NP_006536</a> <a href="#">Entrez Gene 56032 MouseEntrez Gene 363138 RatEntrez Gene 10641 Human Q8WTW4</a>
Synonyms:	FFEVF2; NPR2; NPR2L; TUSC4
Protein Families:	Druggable Genome

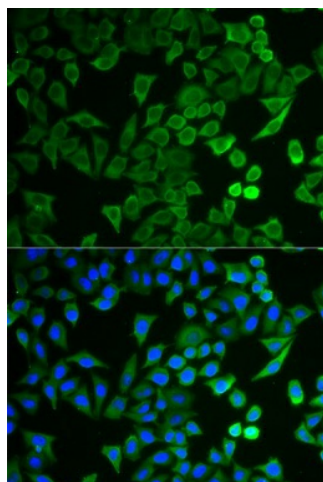


[View online »](#)

## Product images:



Western blot analysis of extracts of various cell lines, using NPRL2 antibody.



Immunofluorescence analysis of HeLa cell using NPRL2 antibody. Blue: DAPI for nuclear staining.