

Product datasheet for **TA332966S**

BAFF (TNFSF13B) Rabbit Polyclonal Antibody

Product data:

Product Type:	Primary Antibodies
Applications:	ELISA, ICC/IF, IHC, WB
Recommended Dilution:	WB, 1:500 - 1:1000 IHC-P, 1:50 - 1:200 IF/ICC, 1:50 - 1:100 ELISA, Recommended starting concentration is 1 µg/mL. Please optimize the concentration based on your specific assay requirements.
Reactivity:	Human, Mouse, Rat
Host:	Rabbit
Isotype:	IgG
Clonality:	Polyclonal
Formulation:	Store at -20°C (regular) and -80°C (long term). Avoid freeze / thaw cycles. Buffer: PBS with 0.02% sodium azide, 50% glycerol, pH7.3.
Concentration:	lot specific
Purification:	Affinity purification
Conjugation:	Unconjugated
Storage:	Store at -20°C. Avoid freeze / thaw cycles.
Stability:	Stable for 12 months from date of receipt.
Predicted Protein Size:	31kDa
Gene Name:	tumor necrosis factor superfamily member 13b
Database Link:	NP_006564 Entrez Gene 24099 Mouse Entrez Gene 498666 Rat Entrez Gene 10673 Human Q9Y275



[View online »](#)

Background:

The protein encoded by this gene is a cytokine that belongs to the tumor necrosis factor (TNF) ligand family. This cytokine is a ligand for receptors TNFRSF13B/TACI, TNFRSF17/BCMA, and TNFRSF13C/BAFFR. This cytokine is expressed in B cell lineage cells, and acts as a potent B cell activator. It has been also shown to play an important role in the proliferation and differentiation of B cells. Alternatively spliced transcript variants encoding distinct isoforms have been identified.

Synonyms:

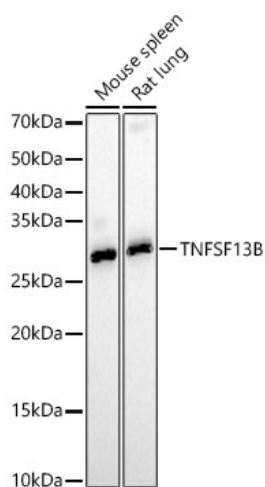
BAFF; BLYS; CD257; DTL; TALL-1; TALL1; THANK; TNFSF20; ZTNF4

Protein Families:

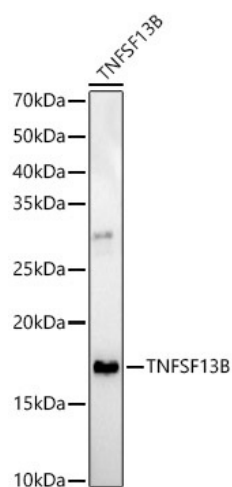
Druggable Genome, Secreted Protein, Transmembrane

Protein Pathways:

Cytokine-cytokine receptor interaction

Product images:


Western blot analysis of various lysates



Western blot analysis of lysates from U-937 cells