

## Product datasheet for **TA332963**

### SRPK1 Rabbit Polyclonal Antibody

#### Product data:

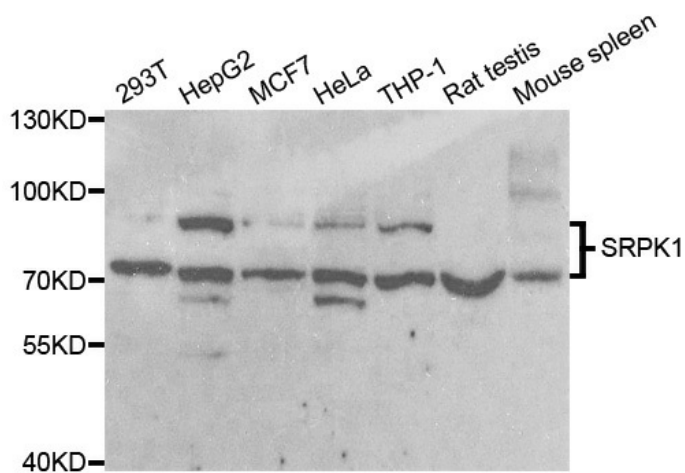
Product Type:	Primary Antibodies
Applications:	IF, IHC, WB
Recommended Dilution:	WB 1:500 - 1:2000;IHC 1:50 - 1:200
Reactivity:	Human, Mouse, Rat
Host:	Rabbit
Isotype:	IgG
Clonality:	Polyclonal
Immunogen:	Recombinant protein of human SRPK1
Formulation:	Store at -20°C (regular) and -80°C (long term). Avoid freeze / thaw cycles. Buffer: PBS with 0.02% sodium azide, 50% glycerol, pH7.3.
Concentration:	lot specific
Purification:	Affinity purification
Conjugation:	Unconjugated
Storage:	Store at -20°C as received.
Stability:	Stable for 12 months from date of receipt.
Predicted Protein Size:	74 kDa
Gene Name:	SRSF protein kinase 1
Database Link:	<a href="#">NP_003128</a> <a href="#">Entrez Gene 20815 MouseEntrez Gene 361811 RatEntrez Gene 6732 Human Q96SB4</a>
Background:	This gene encodes a serine/arginine protein kinase specific for the SR (serine/arginine-rich domain) family of splicing factors. The protein localizes to the nucleus and the cytoplasm. It is thought to play a role in regulation of both constitutive and alternative splicing by regulating intracellular localization of splicing factors. Alternative splicing of this gene results in multiple transcript variants. Additional alternatively spliced transcript variants have been described for this gene, but their full length nature have not been determined.
Synonyms:	SFRSK1



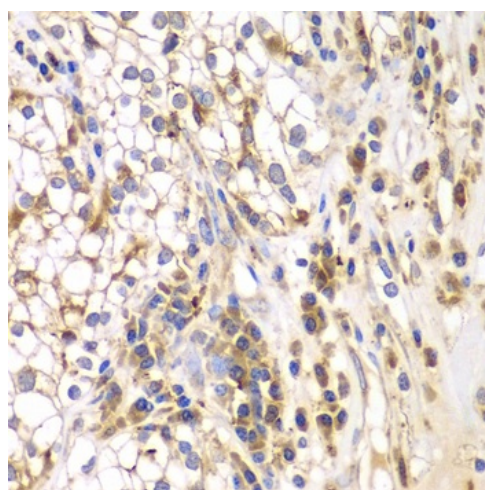
[View online »](#)

Protein Families: Druggable Genome, Protein Kinase

**Product images:**



Western blot analysis of extracts of various cell lines, using SRPK1 antibody.



Immunohistochemistry of paraffin-embedded human kidney cancer using SRPK1 antibody at dilution of 1:200 (400x lens).