

Product datasheet for **TA332962S**

spindlin 1 (SPIN1) Rabbit Polyclonal Antibody

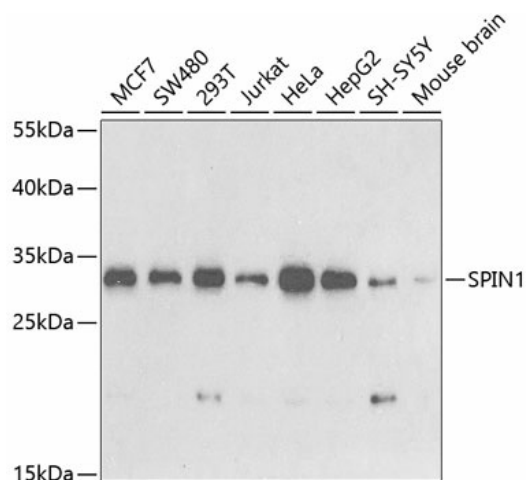
Product data:

Product Type:	Primary Antibodies
Applications:	ELISA, IHC, WB
Recommended Dilution:	WB, 1:500 - 1:2000 IHC-P, 1:50 - 1:200 ELISA, Recommended starting concentration is 1 µg/mL. Please optimize the concentration based on your specific assay requirements.
Reactivity:	Human, Mouse, Rat
Host:	Rabbit
Isotype:	IgG
Clonality:	Polyclonal
Formulation:	Store at -20°C (regular) and -80°C (long term). Avoid freeze / thaw cycles. Buffer: PBS with 0.02% sodium azide, 50% glycerol, pH7.3.
Concentration:	lot specific
Purification:	Affinity purification
Conjugation:	Unconjugated
Storage:	Store at -20°C. Avoid freeze / thaw cycles.
Stability:	Stable for 12 months from date of receipt.
Predicted Protein Size:	30kDa
Gene Name:	spindlin 1
Database Link:	NP_006708 Entrez Gene 20729 Mouse Entrez Gene 361217 Rat Entrez Gene 10927 Human Q9Y657
Background:	Enables methylated histone binding activity. Involved in positive regulation of Wnt signaling pathway; positive regulation of transcription, DNA-templated; and rRNA transcription. Located in cytosol and nucleus.
Synonyms:	SPIN; TDRD24

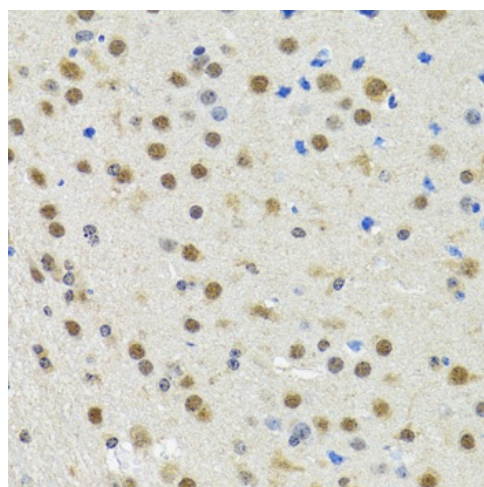


[View online »](#)

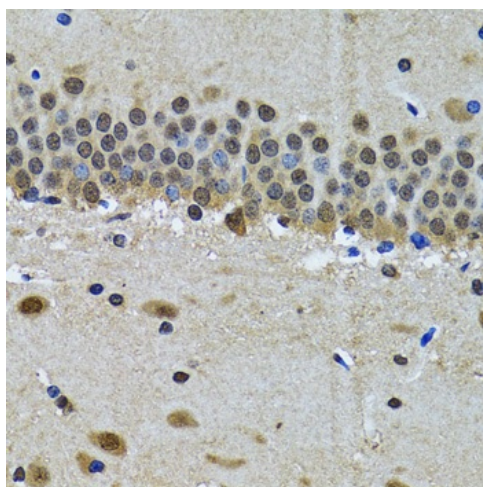
Product images:



Western blot analysis of various lysates using SPIN1 Rabbit pAb ([TA332962]) at 1:1000 dilution. Secondary antibody: HRP-conjugated Goat anti-Rabbit IgG (H+L) (AS014) at 1:10000 dilution. Lysates/proteins: 25µg per lane. Blocking buffer: 3% nonfat dry milk in TBST. Detection: ECL Basic Kit (RM00020). Exposure time: 90s.



Immunohistochemistry analysis of paraffin-embedded Rat brain using SPIN1 Rabbit pAb ([TA332962]) at dilution of 1:100 (40x lens). Microwave antigen retrieval performed with 0.01M PBS Buffer (pH 7.2) prior to IHC staining.



Immunohistochemistry analysis of paraffin-embedded Mouse brain using SPIN1 Rabbit pAb ([TA332962]) at dilution of 1:100 (40x lens). Microwave antigen retrieval performed with 0.01M PBS Buffer (pH 7.2) prior to IHC staining.