

Product datasheet for **TA332962**

spindlin 1 (SPIN1) Rabbit Polyclonal Antibody

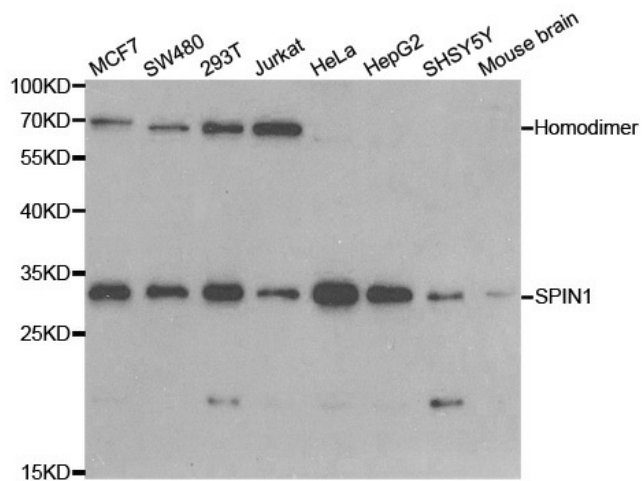
Product data:

Product Type:	Primary Antibodies
Applications:	IHC, WB
Recommended Dilution:	WB 1:500 - 1:2000
Reactivity:	Human, Mouse, Rat
Host:	Rabbit
Isotype:	IgG
Clonality:	Polyclonal
Immunogen:	Recombinant protein of human SPIN1
Formulation:	Store at -20°C (regular) and -80°C (long term). Avoid freeze / thaw cycles. Buffer: PBS with 0.02% sodium azide, 50% glycerol, pH7.3.
Concentration:	lot specific
Purification:	Affinity purification
Conjugation:	Unconjugated
Storage:	Store at -20°C as received.
Stability:	Stable for 12 months from date of receipt.
Predicted Protein Size:	29 kDa
Gene Name:	spindlin 1
Database Link:	NP_006708 Entrez Gene 20729 MouseEntrez Gene 361217 RatEntrez Gene 10927 Human Q9Y657
Synonyms:	SPIN; TDRD24



[View online »](#)

Product images:



Western blot analysis of extracts of various cell lines, using SPIN1 antibody.