

Product datasheet for **TA332957**

Heparin Cofactor II (SERPIND1) Rabbit Polyclonal Antibody

Product data:

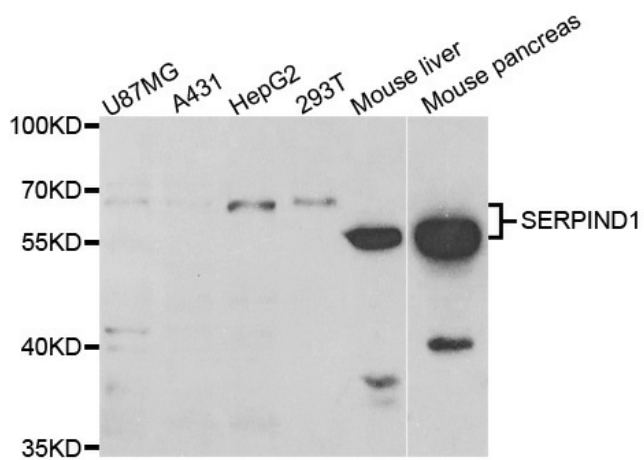
Product Type:	Primary Antibodies
Applications:	WB
Recommended Dilution:	WB 1:500 - 1:2000
Reactivity:	Human, Mouse
Host:	Rabbit
Isotype:	IgG
Clonality:	Polyclonal
Immunogen:	Recombinant protein of human SERPIND1
Formulation:	Store at -20°C (regular) and -80°C (long term). Avoid freeze / thaw cycles. Buffer: PBS with 0.02% sodium azide, 50% glycerol, pH7.3.
Concentration:	lot specific
Purification:	Affinity purification
Conjugation:	Unconjugated
Storage:	Store at -20°C as received.
Stability:	Stable for 12 months from date of receipt.
Predicted Protein Size:	499
Gene Name:	serpin family D member 1
Database Link:	NP_000176 Entrez Gene 15160 Mouse Entrez Gene 3053 Human P05546
Background:	The product encoded by this gene is a serine proteinase inhibitor which rapidly inhibits thrombin in the presence of dermatan sulfate or heparin. The gene contains five exons and four introns. This protein shares homology with antithrombin III and other members of the alpha 1-antitrypsin superfamily. Mutations in this gene are associated with heparin cofactor II deficiency.
Synonyms:	D22S673; HC2; HCF2; HCII; HLS2; LS2; THPH10
Protein Families:	Druggable Genome



[View online »](#)

Protein Pathways: Complement and coagulation cascades

Product images:



Western blot analysis of extracts of various cell lines, using SERPIND1 antibody.