

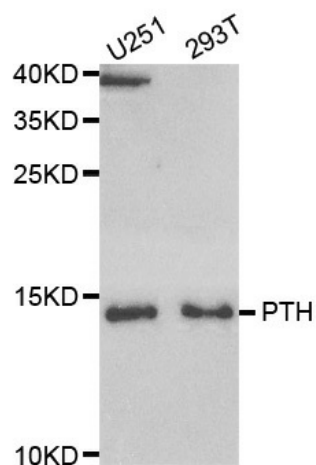
## Product datasheet for TA332955

### Parathyroid Hormone (PTH) Rabbit Polyclonal Antibody

#### Product data:

Product Type:	Primary Antibodies
Applications:	WB
Recommended Dilution:	WB 1:500 - 1:2000
Reactivity:	Human
Host:	Rabbit
Isotype:	IgG
Clonality:	Polyclonal
Immunogen:	Recombinant protein of human PTH
Formulation:	Store at -20°C (regular) and -80°C (long term). Avoid freeze / thaw cycles. Buffer: PBS with 0.02% sodium azide, 50% glycerol, pH7.3.
Concentration:	lot specific
Purification:	Affinity purification
Conjugation:	Unconjugated
Storage:	Store at -20°C as received.
Stability:	Stable for 12 months from date of receipt.
Predicted Protein Size:	12 kDa
Gene Name:	parathyroid hormone
Database Link:	<a href="#">NP_000306</a> <a href="#">Entrez Gene 5741 Human</a> <a href="#">P01270</a>
Background:	The protein encoded by this gene is a hormone secreted by parathyroid cells. This hormone elevates blood Ca <sup>2+</sup> level by dissolving the salts in bone and preventing their renal excretion. Defects in this gene are a cause of familial isolated hypoparathyroidism (FIH).
Synonyms:	PTH1
Protein Families:	Druggable Genome, Secreted Protein

[View online »](#)

**Product images:**

Western blot analysis of extracts of various cell lines, using PTH antibody.