

Product datasheet for **TA332950**

JMJD6 Rabbit Polyclonal Antibody

Product data:

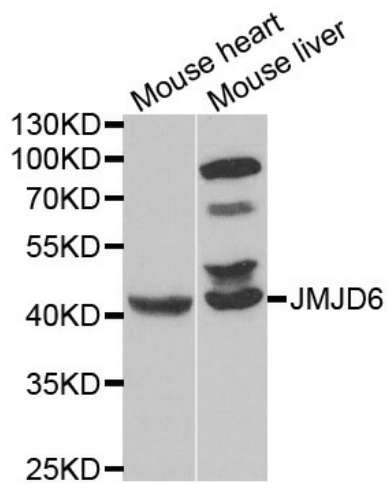
Product Type:	Primary Antibodies
Applications:	WB
Recommended Dilution:	WB 1:500 - 1:2000
Reactivity:	Human, Mouse, Rat
Host:	Rabbit
Isotype:	IgG
Clonality:	Polyclonal
Immunogen:	Recombinant protein of human JMJD6
Formulation:	Store at -20°C (regular) and -80°C (long term). Avoid freeze / thaw cycles. Buffer: PBS with 0.02% sodium azide, 50% glycerol, pH7.3.
Concentration:	lot specific
Purification:	Affinity purification
Conjugation:	Unconjugated
Storage:	Store at -20°C as received.
Stability:	Stable for 12 months from date of receipt.
Predicted Protein Size:	403
Gene Name:	arginine demethylase and lysine hydroxylase
Database Link:	NP_055982 Entrez Gene 107817 MouseEntrez Gene 360665 RatEntrez Gene 23210 Human Q6NYC1
Background:	This gene encodes a nuclear protein with a JmjC domain. JmjC domain-containing proteins are predicted to function as protein hydroxylases or histone demethylases. This protein was first identified as a putative phosphatidylserine receptor involved in phagocytosis of apoptotic cells; however, subsequent studies have indicated that it does not directly function in the clearance of apoptotic cells, and questioned whether it is a true phosphatidylserine receptor. Multiple transcript variants encoding different isoforms have been found for this gene.
Synonyms:	PSR; PTDSR; PTDSR1



[View online »](#)

Protein Families: Druggable Genome, ES Cell Differentiation/IPS

Product images:



Western blot analysis of extracts of various cell lines, using JMJD6 antibody.