

Product datasheet for **TA332944**

SMARCA6 (HELLS) Rabbit Polyclonal Antibody

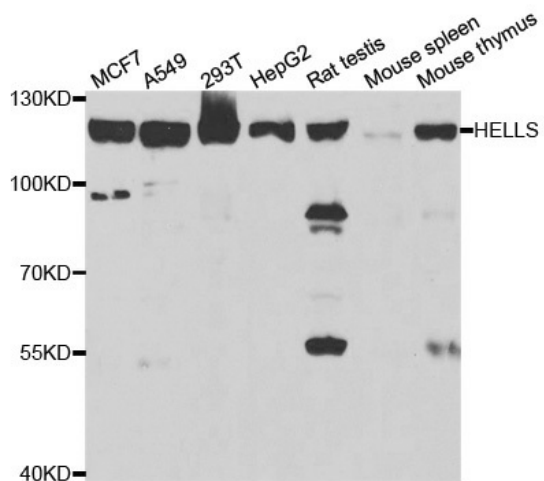
Product data:

Product Type:	Primary Antibodies
Applications:	IP, WB
Recommended Dilution:	WB 1:500 - 1:2000; IP 1:50 - 1:200
Reactivity:	Human, Mouse, Rat
Host:	Rabbit
Isotype:	IgG
Clonality:	Polyclonal
Immunogen:	Recombinant protein of human HELLS
Formulation:	Store at -20°C (regular) and -80°C (long term). Avoid freeze / thaw cycles. Buffer: PBS with 0.02% sodium azide, 50% glycerol, pH7.3.
Concentration:	lot specific
Purification:	Affinity purification
Conjugation:	Unconjugated
Storage:	Store at -20°C as received.
Stability:	Stable for 12 months from date of receipt.
Predicted Protein Size:	838
Gene Name:	helicase, lymphoid-specific
Database Link:	NP_060533 Entrez Gene 15201 MouseEntrez Gene 294071 RatEntrez Gene 3070 Human Q9NRZ9
Background:	This gene encodes a lymphoid-specific helicase. Other helicases function in processes involving DNA strand separation, including replication, repair, recombination, and transcription. This protein is thought to be involved with cellular proliferation and may play a role in leukemogenesis. Alternatively spliced transcript variants encoding different isoforms have been identified.
Synonyms:	LSH; Nbla10143; PASG; SMARCA6



[View online »](#)

Product images:



Western blot analysis of extracts of various cell lines, using HELLs antibody.