

## Product datasheet for **TA332941**

### Mannan Binding Lectin (MBL2) Rabbit Polyclonal Antibody

#### Product data:

Product Type:	Primary Antibodies
Applications:	IHC, WB
Recommended Dilution:	WB 1:500 - 1:2000
Reactivity:	Human, Mouse
Host:	Rabbit
Isotype:	IgG
Clonality:	Polyclonal
Immunogen:	Recombinant protein of human MBL2
Formulation:	Store at -20°C (regular) and -80°C (long term). Avoid freeze / thaw cycles. Buffer: PBS with 0.02% sodium azide, 50% glycerol, pH7.3.
Concentration:	lot specific
Purification:	Affinity purification
Conjugation:	Unconjugated
Storage:	Store at -20°C as received.
Stability:	Stable for 12 months from date of receipt.
Predicted Protein Size:	26 kDa
Gene Name:	mannose binding lectin 2
Database Link:	<a href="#">NP_000233</a> <a href="#">Entrez Gene 17195 Mouse</a> <a href="#">Entrez Gene 4153 Human</a> <a href="#">P11226</a>
Background:	This gene encodes the soluble mannose-binding lectin or mannose-binding protein found in serum. The protein encoded belongs to the collectin family and is an important element in the innate immune system. The protein recognizes mannose and N-acetylglucosamine on many microorganisms, and is capable of activating the classical complement pathway. Deficiencies of this gene have been associated with susceptibility to autoimmune and infectious diseases.
Synonyms:	COLEC1; HSMBPC; MBL; MBL2D; MBP; MBP-C; MBP1; MBPD

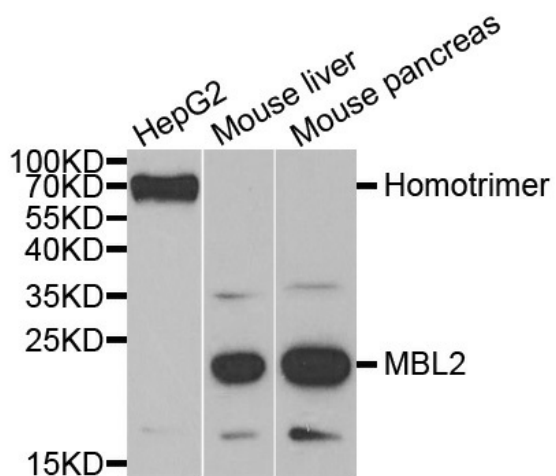


[View online »](#)

Protein Families: Druggable Genome

Protein Pathways: Complement and coagulation cascades

### Product images:



Western blot analysis of extracts of various cell lines, using MBL2 antibody.