

## Product datasheet for **TA332939**

### Aspartate Aminotransferase (GOT1) Rabbit Polyclonal Antibody

#### Product data:

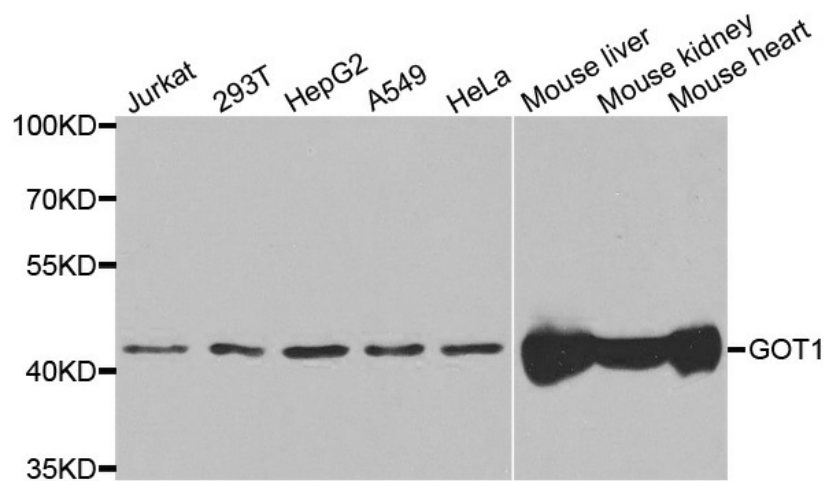
Product Type:	Primary Antibodies
Applications:	ICC/IF, IHC, WB
Recommended Dilution:	WB 1:500 - 1:2000;IF 1:10 - 1:100
Reactivity:	Human, Mouse, Rat
Host:	Rabbit
Isotype:	IgG
Clonality:	Polyclonal
Immunogen:	Recombinant protein of human GOT1
Formulation:	Store at -20°C (regular) and -80°C (long term). Avoid freeze / thaw cycles. Buffer: PBS with 0.02% sodium azide, 50% glycerol, pH7.3.
Concentration:	lot specific
Purification:	Affinity purification
Conjugation:	Unconjugated
Storage:	Store at -20°C as received.
Stability:	Stable for 12 months from date of receipt.
Predicted Protein Size:	46 kDa
Gene Name:	glutamic-oxaloacetic transaminase 1
Database Link:	<a href="#">NP_002070</a> <a href="#">Entrez Gene 14718 Mouse</a> <a href="#">Entrez Gene 24401 Rat</a> <a href="#">Entrez Gene 2805 Human</a> <a href="#">P17174</a>
Background:	Glutamic-oxaloacetic transaminase is a pyridoxal phosphate-dependent enzyme which exists in cytoplasmic and mitochondrial forms, GOT1 and GOT2, respectively. GOT plays a role in amino acid metabolism and the urea and tricarboxylic acid cycles. The two enzymes are homodimeric and show close homology.
Synonyms:	ASTQTL1; cAspAT; cCAT; GIG18



[View online »](#)

**Protein Pathways:** Alanine, aspartate and glutamate metabolism, Arginine and proline metabolism, Cysteine and methionine metabolism, Metabolic pathways, Phenylalanine, tyrosine and tryptophan biosynthesis, Phenylalanine metabolism, Tyrosine metabolism

**Product images:**



Western blot analysis of extracts of various cell lines, using GOT1 antibody.