

Product datasheet for **TA332938**

TTC11 (FIS1) Rabbit Polyclonal Antibody

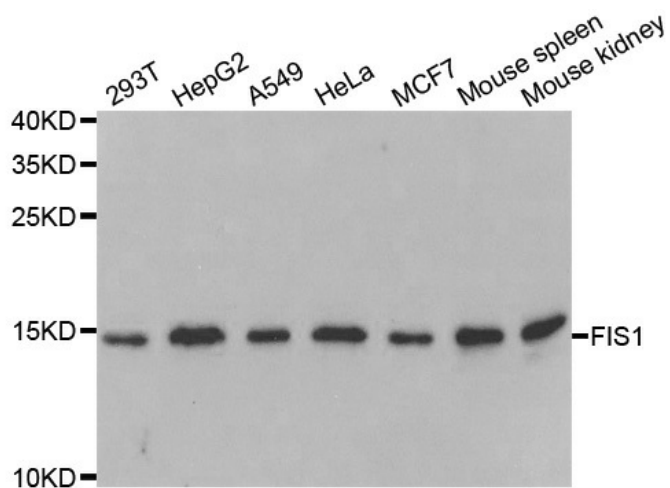
Product data:

Product Type:	Primary Antibodies
Applications:	IF, WB
Recommended Dilution:	WB 1:500 - 1:2000
Reactivity:	Human, Mouse, Rat
Host:	Rabbit
Isotype:	IgG
Clonality:	Polyclonal
Immunogen:	Recombinant protein of human FIS1
Formulation:	Store at -20°C (regular) and -80°C (long term). Avoid freeze / thaw cycles. Buffer: PBS with 0.02% sodium azide, 50% glycerol, pH7.3.
Concentration:	lot specific
Purification:	Affinity purification
Conjugation:	Unconjugated
Storage:	Store at -20°C as received.
Stability:	Stable for 12 months from date of receipt.
Predicted Protein Size:	152
Gene Name:	fission, mitochondrial 1
Database Link:	NP_057152 Entrez Gene 66437 MouseEntrez Gene 288584 RatEntrez Gene 51024 Human Q9Y3D6
Background:	The balance between fission and fusion regulates the morphology of mitochondria. TTC11 is a component of a mitochondrial complex that promotes mitochondrial fission (James et al., 2003)
Synonyms:	CGI-135; TTC11
Protein Families:	Transmembrane



[View online »](#)

Product images:



Western blot analysis of extracts of various cell lines, using FIS1 antibody.