

## Product datasheet for **TA332937**

### **FAM82A2 (RMDN3) Rabbit Polyclonal Antibody**

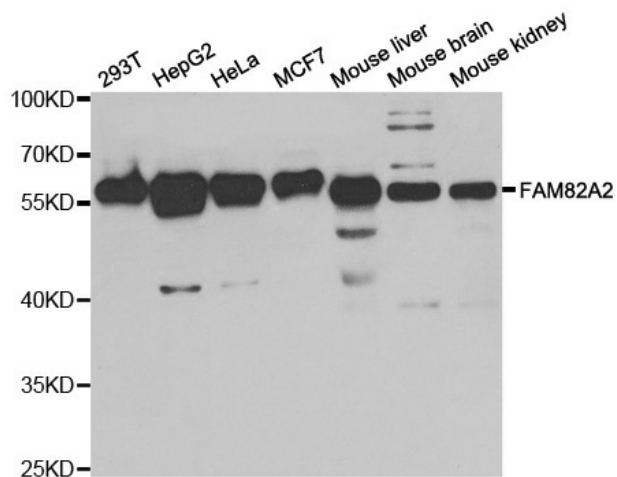
#### **Product data:**

<b>Product Type:</b>	Primary Antibodies
<b>Applications:</b>	ICC/IF, IHC, WB
<b>Recommended Dilution:</b>	WB 1:500 - 1:2000
<b>Reactivity:</b>	Human, Mouse, Rat
<b>Host:</b>	Rabbit
<b>Isotype:</b>	IgG
<b>Clonality:</b>	Polyclonal
<b>Immunogen:</b>	Recombinant protein of human FAM82A2
<b>Formulation:</b>	Store at -20°C (regular) and -80°C (long term). Avoid freeze / thaw cycles. Buffer: PBS with 0.02% sodium azide, 50% glycerol, pH7.3.
<b>Concentration:</b>	lot specific
<b>Purification:</b>	Affinity purification
<b>Conjugation:</b>	Unconjugated
<b>Storage:</b>	Store at -20°C as received.
<b>Stability:</b>	Stable for 12 months from date of receipt.
<b>Predicted Protein Size:</b>	52 kDa
<b>Gene Name:</b>	regulator of microtubule dynamics 3
<b>Database Link:</b>	<a href="#">NP_060615</a> <a href="#">Entrez Gene 67809 MouseEntrez Gene 311328 RatEntrez Gene 55177 Human Q96TC7</a>
<b>Background:</b>	RMDN3 (regulator of microtubule dynamics 3) is a protein-coding gene. Diseases associated with RMDN3 include cerebritis, and noma. GO annotations related to this gene include protein binding. An important paralog of this gene is RMDN1.
<b>Synonyms:</b>	FAM82A2; FAM82C; ptpip51; RMD-3; RMD3
<b>Protein Families:</b>	Transmembrane



[View online »](#)

## Product images:



Western blot analysis of extracts of various cell lines, using FAM82A2 antibody.