

Product datasheet for **TA332935**

EZH1 Rabbit Polyclonal Antibody

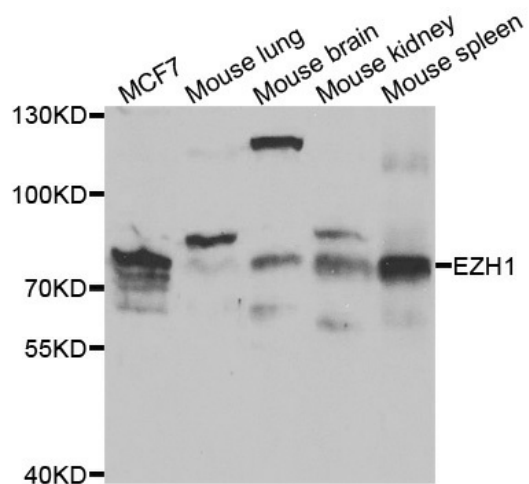
Product data:

Product Type:	Primary Antibodies
Applications:	WB
Recommended Dilution:	WB 1:500 - 1:2000
Reactivity:	Human, Mouse, Rat
Host:	Rabbit
Isotype:	IgG
Clonality:	Polyclonal
Immunogen:	Recombinant protein of human EZH1
Formulation:	Store at -20°C (regular) and -80°C (long term). Avoid freeze / thaw cycles. Buffer: PBS with 0.02% sodium azide, 50% glycerol, pH7.3.
Concentration:	lot specific
Purification:	Affinity purification
Conjugation:	Unconjugated
Storage:	Store at -20°C as received.
Stability:	Stable for 12 months from date of receipt.
Predicted Protein Size:	747
Gene Name:	enhancer of zeste 1 polycomb repressive complex 2 subunit
Database Link:	NP_001982 Entrez Gene 14055 MouseEntrez Gene 303547 RatEntrez Gene 2145 Human Q92800
Background:	EZH1 is a component of a noncanonical Polycomb repressive complex-2 (PRC2) that mediates methylation of histone H3 (see MIM 602812) lys27 (H3K27) and functions in the maintenance of embryonic stem cell pluripotency and plasticity (Shen et al., 2008)
Synonyms:	KMT6B
Protein Families:	Druggable Genome, Transcription Factors



[View online »](#)

Product images:



Western blot analysis of extracts of various cell lines, using EZH1 antibody.