

## Product datasheet for **TA332932**

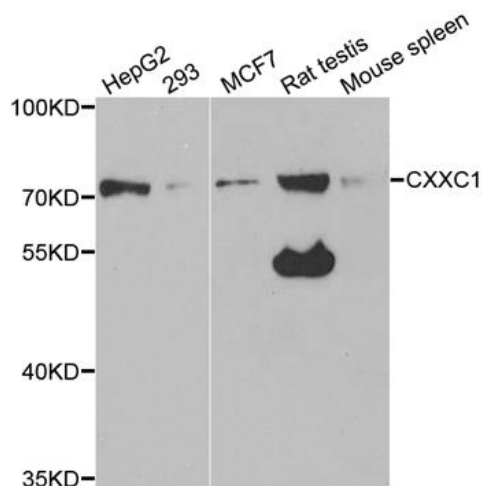
### **CGBP (CXXC1) Rabbit Polyclonal Antibody**

#### **Product data:**

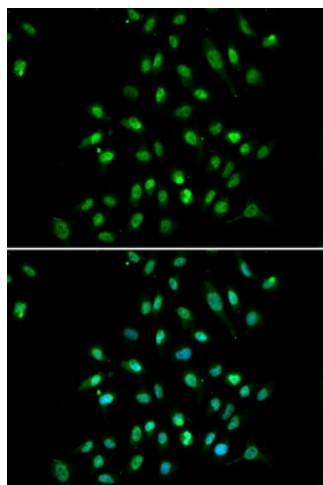
<b>Product Type:</b>	Primary Antibodies
<b>Applications:</b>	ICC/IF, WB
<b>Recommended Dilution:</b>	WB 1:500 - 1:2000;IF 1:50 - 1:200
<b>Reactivity:</b>	Human, Mouse, Rat
<b>Host:</b>	Rabbit
<b>Isotype:</b>	IgG
<b>Clonality:</b>	Polyclonal
<b>Immunogen:</b>	Recombinant protein of human CXXC1
<b>Formulation:</b>	Store at -20°C (regular) and -80°C (long term). Avoid freeze / thaw cycles. Buffer: PBS with 0.02% sodium azide, 50% glycerol, pH7.3.
<b>Concentration:</b>	lot specific
<b>Purification:</b>	Affinity purification
<b>Conjugation:</b>	Unconjugated
<b>Storage:</b>	Store at -20°C as received.
<b>Stability:</b>	Stable for 12 months from date of receipt.
<b>Gene Name:</b>	CXXC finger protein 1
<b>Database Link:</b>	<a href="#">NP_055408</a> <a href="#">Entrez Gene 74322 Mouse</a> <a href="#">Entrez Gene 291440 Rat</a> <a href="#">Entrez Gene 30827 Human</a> <a href="#">Q9P0U4</a>
<b>Background:</b>	Proteins that contain a CXXC motif within their DNA-binding domain, such as CXXC1, recognize CpG sequences and regulate gene expression (Carlone and Skalnik, 2001
<b>Synonyms:</b>	2410002I16Rik; 5830420C16Rik; CFP1; CGBP; hCGBP; HsT2645; PCCX1; PHF18; SPP1; ZCGPC1
<b>Protein Families:</b>	Druggable Genome, Transcription Factors



[View online »](#)

**Product images:**

Western blot analysis of extracts of various cell lines, using CXXC1 antibody.



Immunofluorescence analysis of A549 cell using CXXC1 antibody. Blue: DAPI for nuclear staining.