

Product datasheet for **TA332930**

TAF172 (BTAF1) Rabbit Polyclonal Antibody

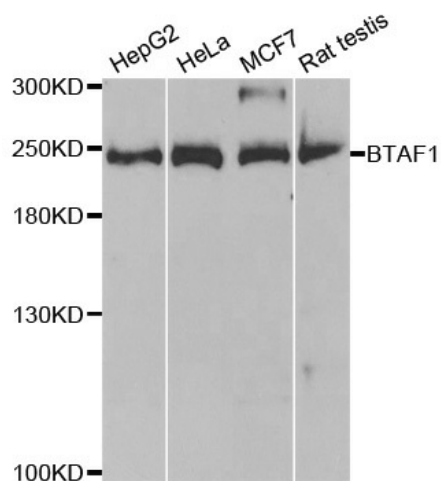
Product data:

Product Type:	Primary Antibodies
Applications:	ChIP, IP, WB
Recommended Dilution:	WB 1:500 - 1:2000;IP 1:50 - 1:200;ChIP 1:20 - 1:100
Reactivity:	Human, Rat
Host:	Rabbit
Isotype:	IgG
Clonality:	Polyclonal
Immunogen:	Recombinant protein of human BTAF1
Formulation:	Store at -20°C (regular) and -80°C (long term). Avoid freeze / thaw cycles. Buffer: PBS with 0.02% sodium azide, 50% glycerol, pH7.3.
Concentration:	lot specific
Purification:	Affinity purification
Conjugation:	Unconjugated
Storage:	Store at -20°C as received.
Stability:	Stable for 12 months from date of receipt.
Predicted Protein Size:	1849
Gene Name:	B-TFIID TATA-box binding protein associated factor 1
Database Link:	NP_003963 Entrez Gene 368042 RatEntrez Gene 9044 Human Q14981
Background:	This gene encodes a TAF (TATA box-binding protein-associated factor), which associates with TBP (TATA box-binding protein) to form the B-TFIID complex that is required for transcription initiation of genes by RNA polymerase II. This TAF has DNA-dependent ATPase activity, which drives the dissociation of TBP from DNA, freeing the TBP to associate with other TATA boxes or TATA-less promoters.
Synonyms:	MOT1; TAF(II)170; TAF172; TAFII170
Protein Families:	Transcription Factors



[View online »](#)

Product images:



Western blot analysis of extracts of various cell lines, using BTAF1 antibody.