

Product datasheet for **TA332928**

Apg3 (ATG3) Rabbit Polyclonal Antibody

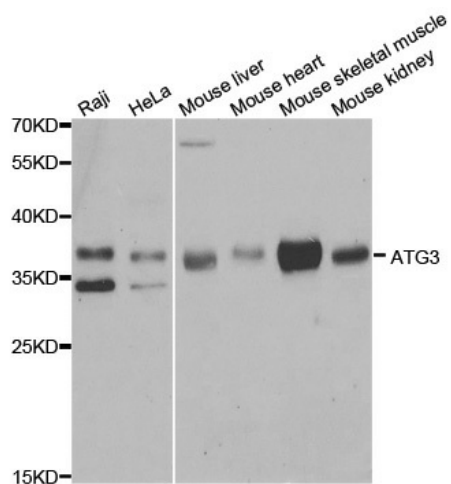
Product data:

Product Type:	Primary Antibodies
Applications:	ICC/IF, WB
Recommended Dilution:	WB 1:500 - 1:2000
Reactivity:	Human, Mouse, Rat
Host:	Rabbit
Isotype:	IgG
Clonality:	Polyclonal
Immunogen:	Recombinant protein of human ATG3
Formulation:	Store at -20°C (regular) and -80°C (long term). Avoid freeze / thaw cycles. Buffer: PBS with 0.02% sodium azide, 50% glycerol, pH7.3.
Concentration:	lot specific
Purification:	Affinity purification
Conjugation:	Unconjugated
Storage:	Store at -20°C as received.
Stability:	Stable for 12 months from date of receipt.
Predicted Protein Size:	314
Gene Name:	autophagy related 3
Database Link:	NP_071933 Entrez Gene 67841 MouseEntrez Gene 171415 RatEntrez Gene 64422 Human Q9NT62
Background:	This gene encodes a ubiquitin-like-conjugating enzyme and is a component of ubiquitination-like systems involved in autophagy, the process of degradation, turnover and recycling of cytoplasmic constituents in eukaryotic cells. This protein is known to play a role in regulation of autophagy during cell death. A pseudogene of this gene is located on chromosome 20. Alternative splicing results in multiple transcript variants encoding different isoforms.
Synonyms:	APG3; APG3-LIKE; APG3L; PC3-96
Protein Pathways:	Regulation of autophagy



[View online »](#)

Product images:



Western blot analysis of extracts of various cell lines, using ATG3 antibody.